

SHARP

BUSINESS | 文件系統

Quick Guide

For CR4 Cloud Series

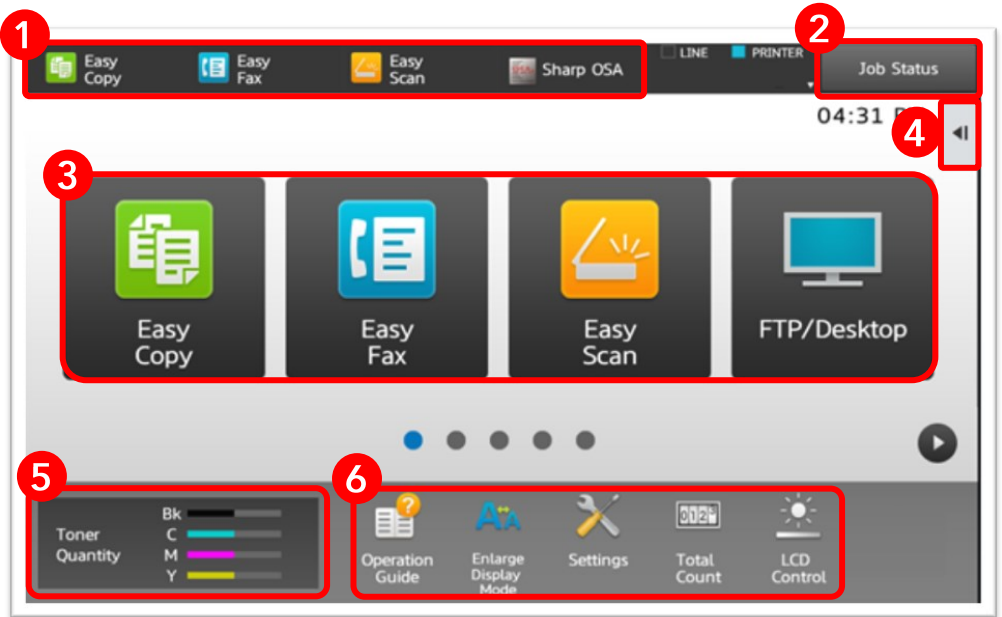
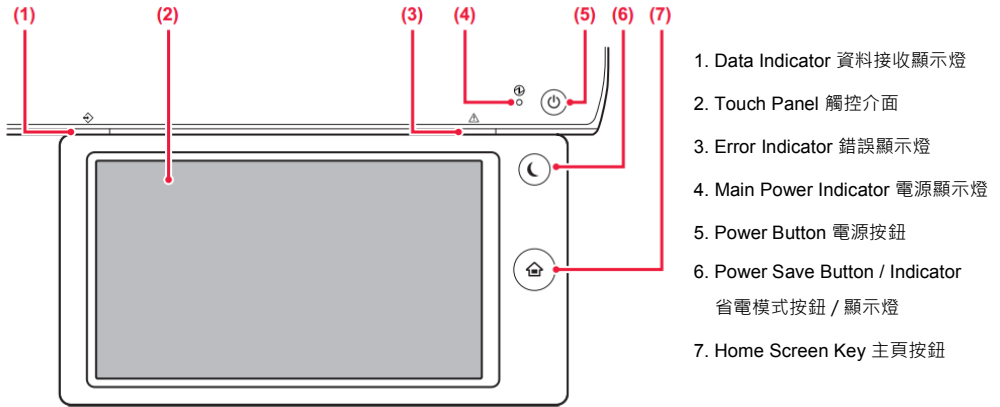
MX-3060N / MX-3560N

MX-4070N / MX-5070N / MX-6070N

Table of Contents 目錄

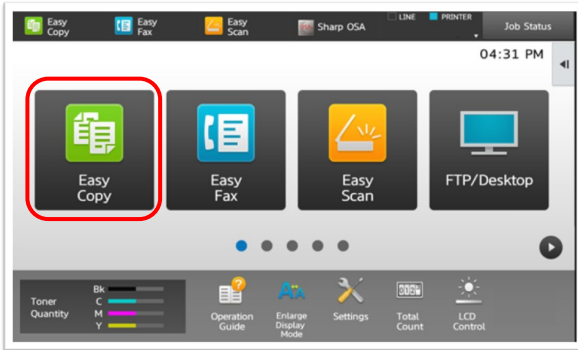
Panel Overview 面板概覽	4
Copy 影印	5
Scan 掃描	11
Document Filing 文書管理	14
Fax 傳真	16
Print 列印	18
Toner Remain and Total Count 碳粉量及打印張數	20
Misfeed Solution 夾紙處理	22
Contact Us 聯絡我們	23

Panel Overview 面板概覽



- | | |
|-----------------------|----------------------|
| 1. Mode Shortcut 模式捷徑 | 4. Action Panel 快捷選項 |
| 2. Job Status 工作狀態 | 5. Toner Remain 碳粉量 |
| 3. Modes 工作模式 | 6. Settings 設定 |

Copy 影印



Tap Easy Copy mode from Home Screen

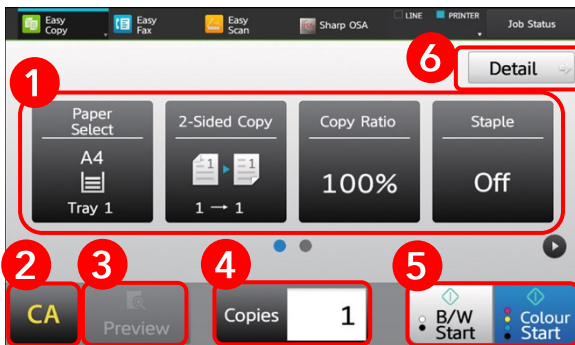
點擊主螢幕的簡易影印模式

⇒ Place your original on document glass or document feeder

將文件置於玻璃面或送紙器

⇒ Tap B/W Start or Color Start to copy or continue to configure

點擊 [黑白 / 彩色啟動] 開始影印
或繼續修改設定



1. Copy Functions 功能選項

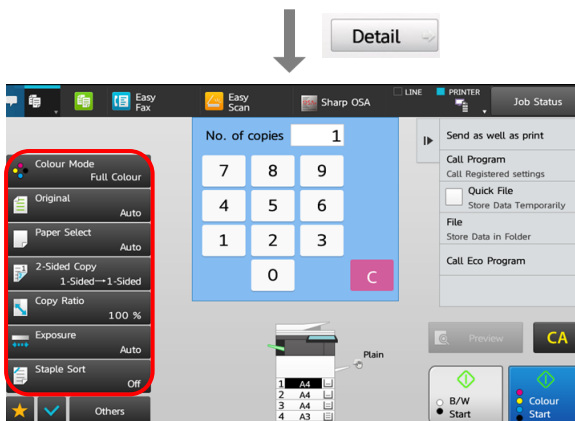
2. Clear settings 重設選項

3. Preview 預覽

4. No. of Copies 影印份數

5. Start buttons 啟動鍵

6. Detail settings 切換至普通模式



Original Size 原稿尺寸

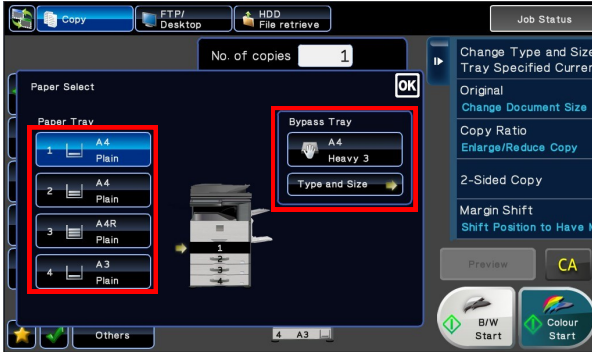
⇒ To set the size of original manually, tap Original

點擊 [原稿]

⇒ Select the size accordingly

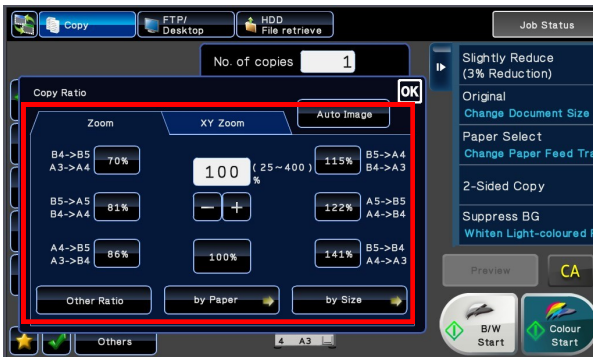
選擇原稿大小

Copy 影印



Paper Select 選擇紙張

- ⇒ Tap Paper Select
- 點擊 [紙張選擇]
- ⇒ Select paper tray
- 選擇紙盤
- ⇒ Configure paper type
- 揀選紙張類別



Changing Copy Ratio 放大或縮小

- ⇒ Tap Copy Ratio
- 點擊 [影印倍率]
- ⇒ Choose the preset zoom options
- such as A4 to A3
- 揀選預設倍率
- ⇒ Or enter ratio manually
- 或手動鍵入倍率



Duplex Copying 雙面影印

- ⇒ Tap 2-sided copy
- 點擊 [雙面影印]
- ⇒ Select the desired action
- 選擇所需操作

Copy 影印



⇒ For more functions, tap Others
(Page 1)

點擊 [其他] 以使用更多功能

(第一頁)

⇒ Please go to P.9 for more information

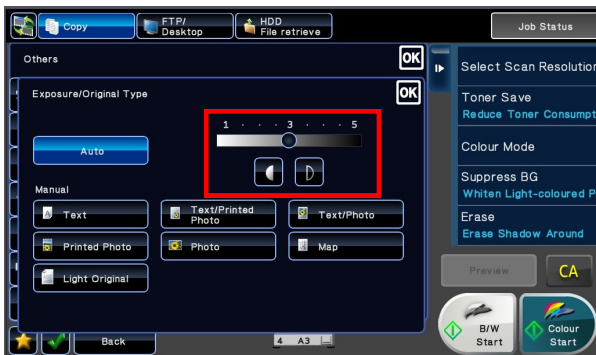
第 9 頁印有詳盡解說



⇒ For more functions, tap Others
(Page 2)

點擊 [其他] 以使用更多功能

(第二頁)



Adjusting Exposure 曝光調節

⇒ Tap Exposure

點擊 [曝光]

⇒ Choose the pre-set exposure settings at the bottom

選擇預設曝光度

⇒ Or adjust manually by moving the bar at the right hand side

或手動調較曝光度

Copy 影印



You can always save frequently used settings for quick access

您可以選擇儲存常用選項為捷徑

⇒ Tap Program Registration

點擊程式登錄



⇒ Tap the empty lot in Favorites menu

點擊常用設定中的空白方格

⇒ Enter a name for it and tap OK

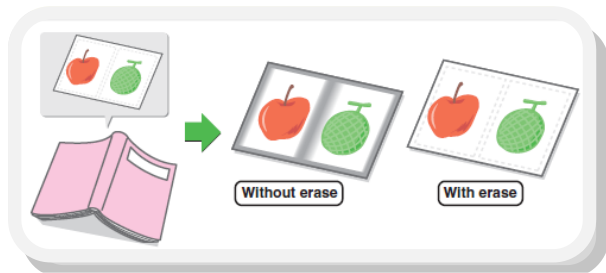
輸入名稱然後按 OK



⇒ Register for Home or Favorite

登錄到主螢幕或常用設定

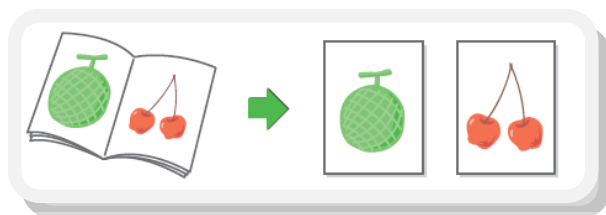
Copy 影印 - Other functions 其他功能



Erase 消除週邊陰影

- ⇒ Tap the desired erase mode and select one of the 4 erase modes

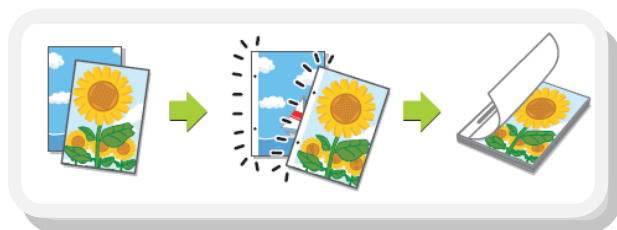
此功能可消除書脊或較厚原稿週邊的陰影



Dual Page Copy 雙頁影印

- ⇒ Produces separate copies of two document pages that are placed side by side on the document glass

此功能可將書冊左右兩頁分別印在紙上，亦可印在雙面單張影印紙上

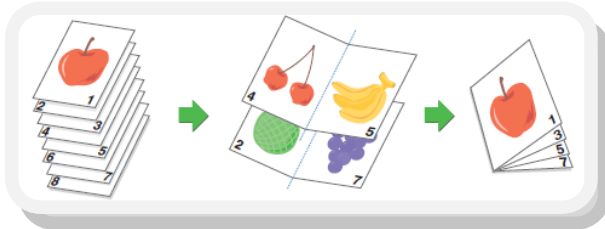


Margin Shift 加空白邊 (預留釘裝線)

- ⇒ Adjust the margin by shifting the copy image right, left or down.

Useful when you wish to bind the copies with a string or in a binder.

此功能將影印影像移位以騰出釘裝空間，方便於綑綁或釘裝成書籍



Pamphlet Copy 書冊影印

⇒ Arrange copies into an attractive booklet or pamphlet

此功能可影印並摺疊成書冊，如有安裝中央釘裝分頁機，可自動釘裝摺成書冊



Multi Shot 多頁合併

⇒ Use this function to present multiple pages in a compact format, or show a view of all pages on one sheet

此功能可將兩張至四張原稿印在單面影印紙上



Card Shot 卡片合併

⇒ Make copies for identification purposes and helps save paper

此功能可同時影印卡片的正反兩面於單張影印紙的中央

Scan 掃描

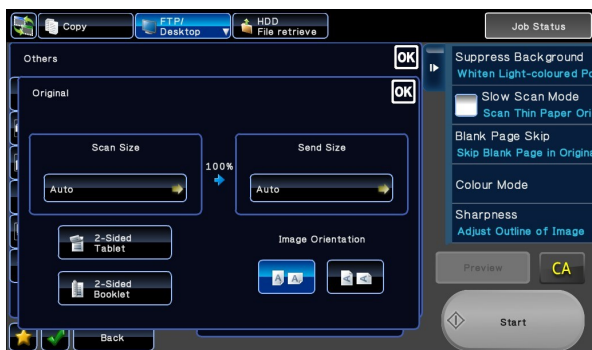


Tap Scan mode from Home Screen

點選主頁的掃描模式



1. Destination 傳送位址
2. Scan Settings 掃描設定
3. Other functions 其他功能
4. Start 啟動



Original 原稿

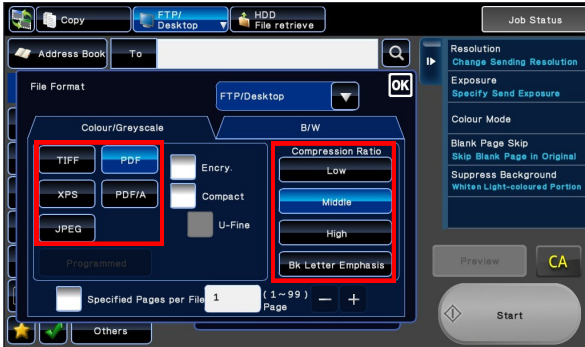
⇒ Tap original to select scan and send size

點擊 [原稿] 選擇掃描尺寸

⇒ You can also change the orientation

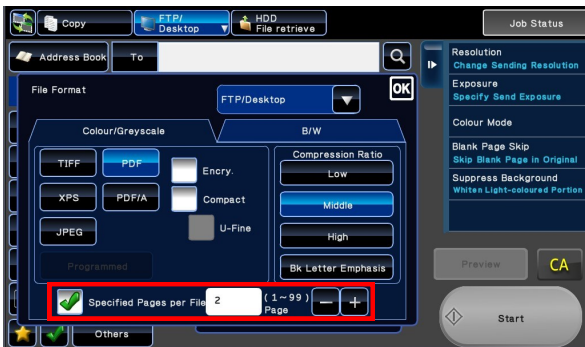
您亦可以切換橫向和豎向

Scan 掃描

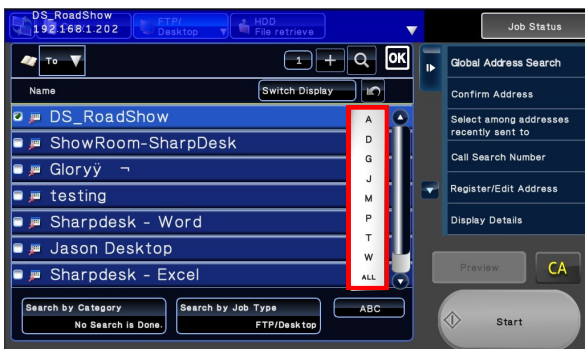


File Format 檔案格式

- ⇒ Tap Color Mode to select black and white or full color scan
選擇彩色或黑白掃描
- ⇒ Select file format
選擇檔案格式
- ⇒ Select Compression Ratio
選擇壓縮比例



- ⇒ You may configure pages per file by altering the number inside the box
設定每檔指定頁面方便掃描大量文件



Destination 傳送位址

- ⇒ Tap Address Book to select destination
從 [位址目錄] 選取目的地
- ⇒ Drag or tap the navigation bar to search for recipients
滑動或點擊導航欄找尋收件人

Scan 掃描



⇒ For more functions, tap Others
(Page 1)

點擊 [其他] 以使用更多功能

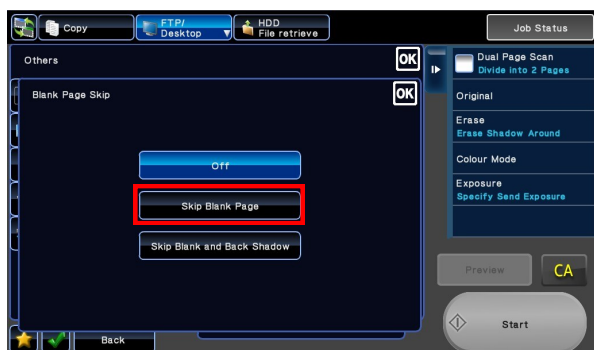
(第一頁)



⇒ For more functions, tap Others
(Page 2)

點擊 [其他] 以使用更多功能

(第二頁)



Blank Page Skip 刪除空白頁

⇒ To skip blank pages of original in order to create a more concise file

刪除空白頁功能可避免掃描空白頁面，縮減檔案大小

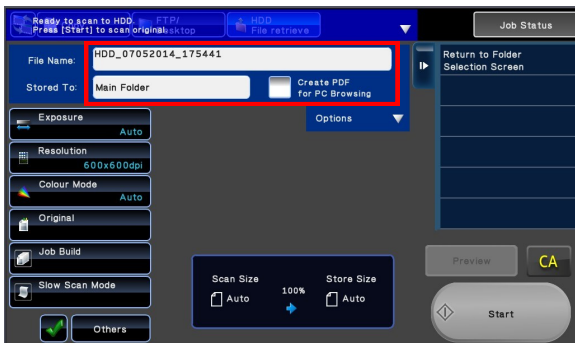
Document Filing 文書管理



Scan to Hard Disk 掃描至硬碟

⇒ To store file on MFP's hard disk for further processing, tap Scan to HDD

要儲存檔案留待稍後使用, 點擊 [掃描至硬碟]



⇒ Enter file name

輸入檔案名稱

⇒ Choose destination

選擇存檔位址

⇒ Tap Start

點擊開始

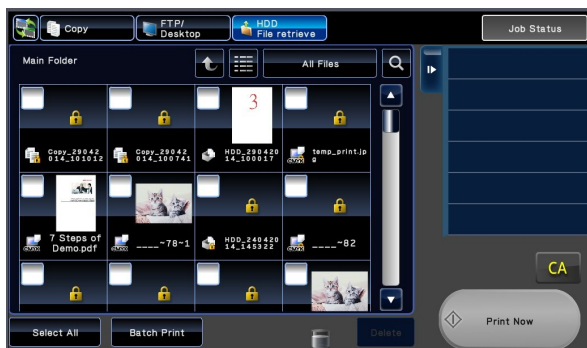
Document Filing 文書管理



Retrieve Files 讀取檔案

⇒ To access saved files, tap HDD File Retrieve from Home Screen

點擊 [硬碟檔案取得] 讀取已儲存檔案



⇒ Select desired file and print

選取所需檔案並列印



Scan to USB Flash Drive

掃描至 USB 硬碟

⇒ To scan to USB Flash Drive, select Scan to Ext. Memory and follow the steps of normal scanning

要儲存檔案至 USB 硬碟可選取 [掃描至 USB 記憶裝置]

Fax 傳真

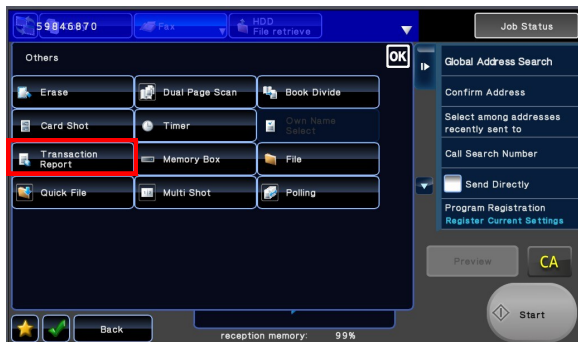


- ⇒ Tap Fax mode from Home Screen
- 從主畫面點擊傳真模式



- ⇒ Select recipients from Address Book
- 從 [位址目錄] 選擇收件人
- ⇒ Or enter fax number
- 或輸入傳真號碼

Fax 傳真



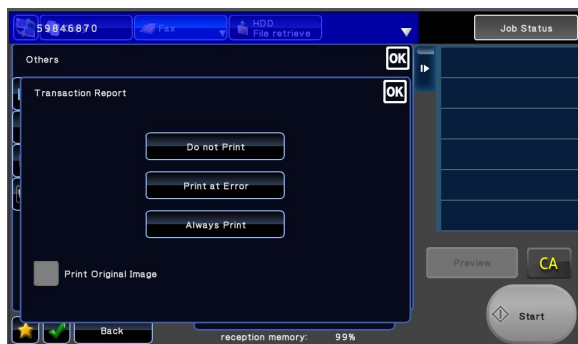
Transaction Report 傳送報告

⇒ To retrieve transaction report, tap Special Mode

如要獲取傳送報告，請點擊 [其他]

⇒ Tap Transaction Report

點擊 [傳送報告]



⇒ You may choose to print at error or always print

您可以選擇於 [傳送錯誤時列印]

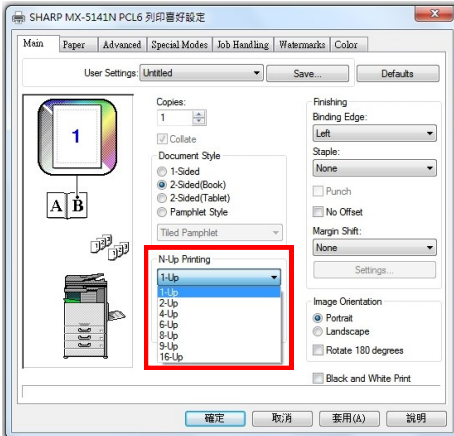
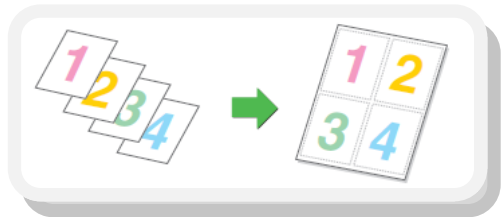
或 [每次列印]

Print 列印

N-Up Printing 多頁合併

⇒ Use this function to present multiple pages in a compact format

此功能可將兩張至四張原稿印在單面影印紙上



Retention Printing 保留列印工作

⇒ Click Job Handling

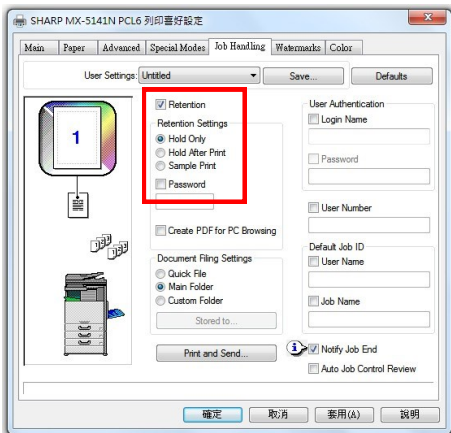
點擊 Job Handling

⇒ Check the box Retention

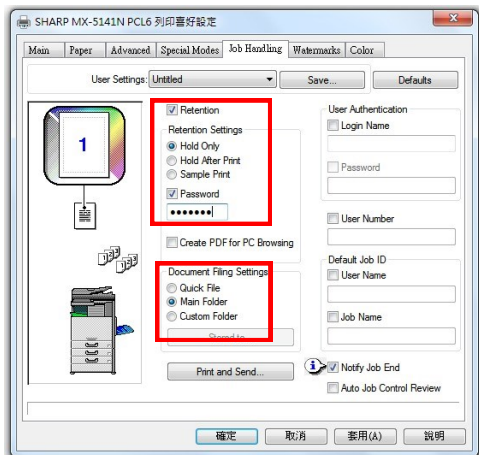
點擊 Retention

⇒ Choose Hold Only

點擊 Hold Only 以保留列印文件於影印機硬碟內



Print 列印

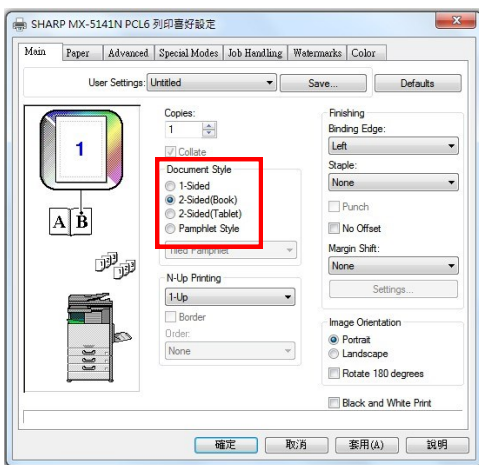


⇒ To enhance security, you may set a password to protect your file

設定五位數字密碼以保護檔案不被他人列印或刪除

⇒ Change Document Filing Settings to where you want your file to be stored

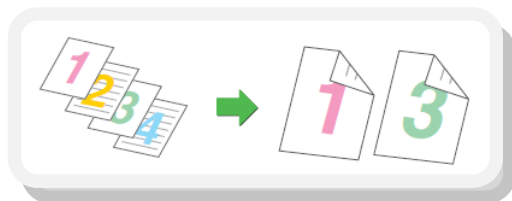
您亦可以改變檔案儲存在硬碟那一個文件夾



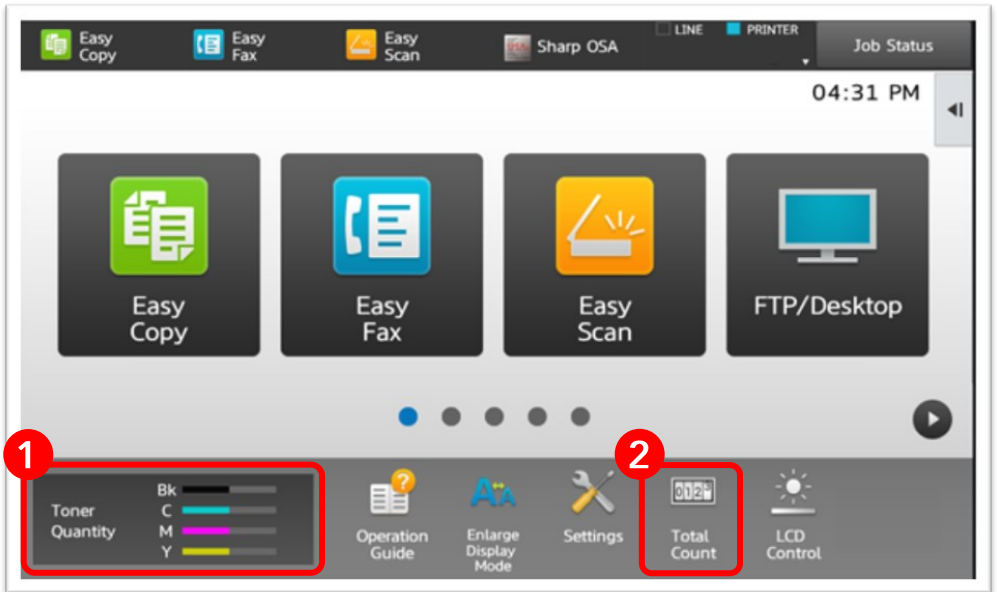
Duplex 雙面列印

⇒ Select 2-Sided (Book) or 2-sided (Tablet)

根據揭頁方向選擇 Book 或 Tablet



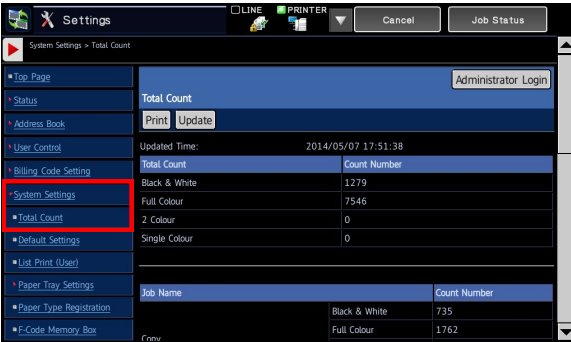
Toner Remain and Total Count 碳粉量及打印張數



1. Toner remain is shown on Home Screen
2. To check toner remain details and total count, simply hold the Home Screen button or tap Total Count.

按住主頁按鈕或點擊 [總印量] 以查閱剩餘碳粉量及打印張數

Toner Remain and Total Count 碳粉量及打印張數



For detailed count, tap Settings from Home Screen

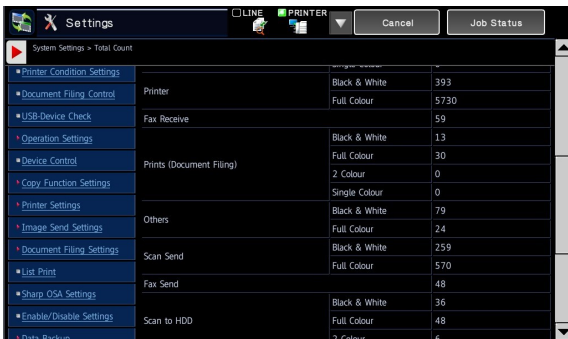
查詢詳細用量可從主畫面點擊 [設定]

⇒ Tap System Settings

點擊 [系統設定]

⇒ Tap Total Count

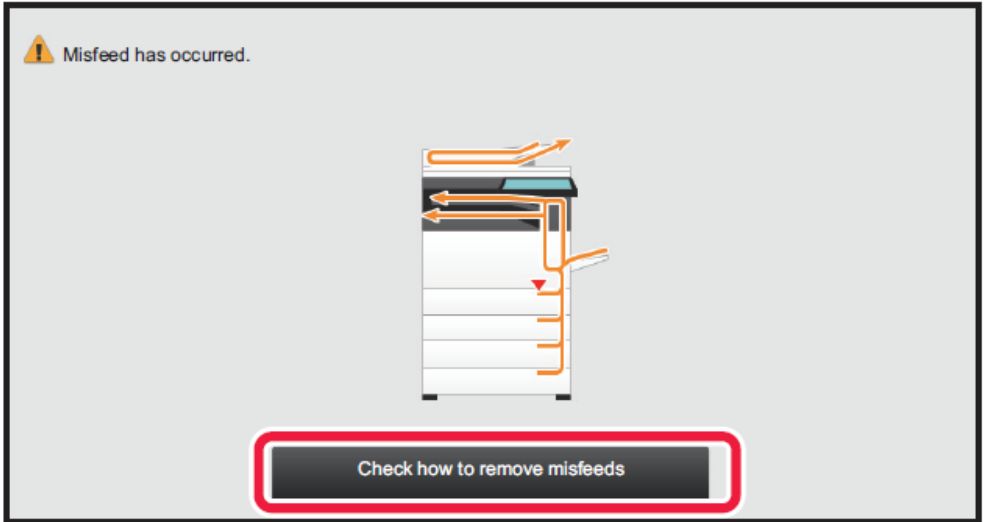
點擊 [總張數]



⇒ Scroll down for details or print the report

向下滑動查看更多或列印報告

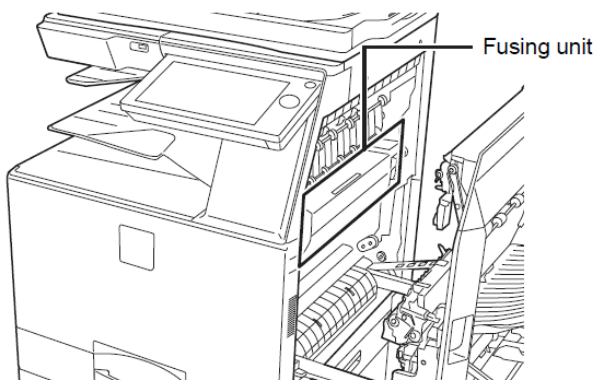
Misfeed Solution 夾紙處理



When a paper misfeed occurs, "Paper Jam" message will appear

- ⇒ Tap the [Check how to remove misfeeds] button
- ⇒ Follow instructions until misfeed is cleared, the message will disappear right away.

當影印機出現夾紙訊息時，點擊 [如何清除夾紙]，並依指示移除問題紙張



Do not touch the Fusing Unit or you may burn yourself.

為免灼傷皮膚，移除夾紙時請避免觸碰左圖中的 Fusing Unit

Contact Us



聯絡我們

Sales Enquiry Hotline

Tel: 2822 9395

查詢及銷售熱線

Fax: 2866 9593

Service Hotline

Tel: 2427 5563

文件系統服務熱線

Fax: 2410 8911

Meter & Order Toner

報錶及預訂碳粉



Level 26, Tower 1, Kowloon Commerce Centre,

KCC Office Showroom

51 Kwai Cheong Road,

文件管理系統陳列室

Kwai Chung, New Territories

香港新界葵涌葵昌路 51 號九龍貿易中心 1 座 26 樓



SHARP

S.A.S ELECTRIC CO. LTD.

Level 26, Tower 1, Kowloon Commerce Centre, 51 Kwai Cheong Road, Kwai Chung, NT

Hotline: 2822 9395

Fax: 2866 9593

www.sharp.com.hk