

SHARP[®]

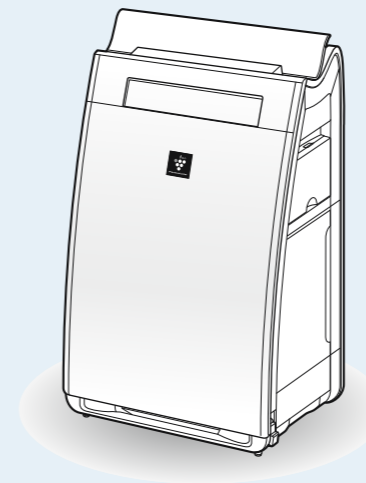
Humidifying Air Purifier

Operation Manual

Model

KI-AJ60-W

High-Density 25000 * 1



Thanks for purchasing the SHARP Air Purifier.
Please read this manual carefully before operation.
Please keep this manual properly for future reference.

Hong Kong Electrical Apparatus Safety Specification
(International Electrotechnical Commission Specification)

CONTENTS

Page

Features	E-2
Precautions	E-4
Parts Names	E-6
Before Operation	
● Installation instructions	E-10
● Installation of Filter	E-11
Operation	
● Power ON/OFF Mode	E-12
● Fan Speed	
● Humidifying Mode	E-13
● Full Power Spot Purify Mode/ Full Power Shower Purify Mode/Clean Assist Mode	E-14
● Change of Louver Direction	
Function	
● Temperature/Humidity Indicator	E-15
● Child Lock	
● PCI ON/OFF	
● Auto Cleaning of Pre-filter	E-16
● ON/OFF Timer	E-17
● Mode Settings	E-17
· Function and Mode Settings	E-17
· How to Change the Settings	E-18
· Sensor Light Brightness/Fill Water Indicator/Auto Recovery/ Light Control Sensor/PM2.5Sensor/ Odor Sensor/ Auto Cleaning of Pre-filter	E-19
Care and Maintenance	
● Maintenance Location	E-21
· HEPA Filter / Deodorizing Filter	E-22
· Humidifying Filter/Tray	
● Water Tank	E-23
● Humidifying Filter/Tray	
● Tray Separation Plate/Float/Wheel	E-24
● Main Unit/Back Panel/Sensor	E-25
● HEPA Filter/Deodorizing Filter	
● PCI Generator (Electrode)	E-26
● Dust Box	E-27
● Pre-filter	E-29
PCI Generator/Replacement of Consumables	
● Ag+ Device	E-31
● PCI Generator	
● Humidifying Filter	
● HEPA Filter	
● Deodorizing Filter	
Troubleshooting	E-33
Specifications	E-40

SHARP[®]
SHARP CORPORATION



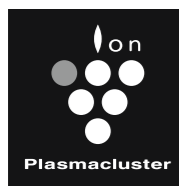
生産管理用

TINS-A291SRRZ 18A-①

Features

(P-) refers to Page

Air Purifier equipped with PCI technology solves your troubles throughout the year.



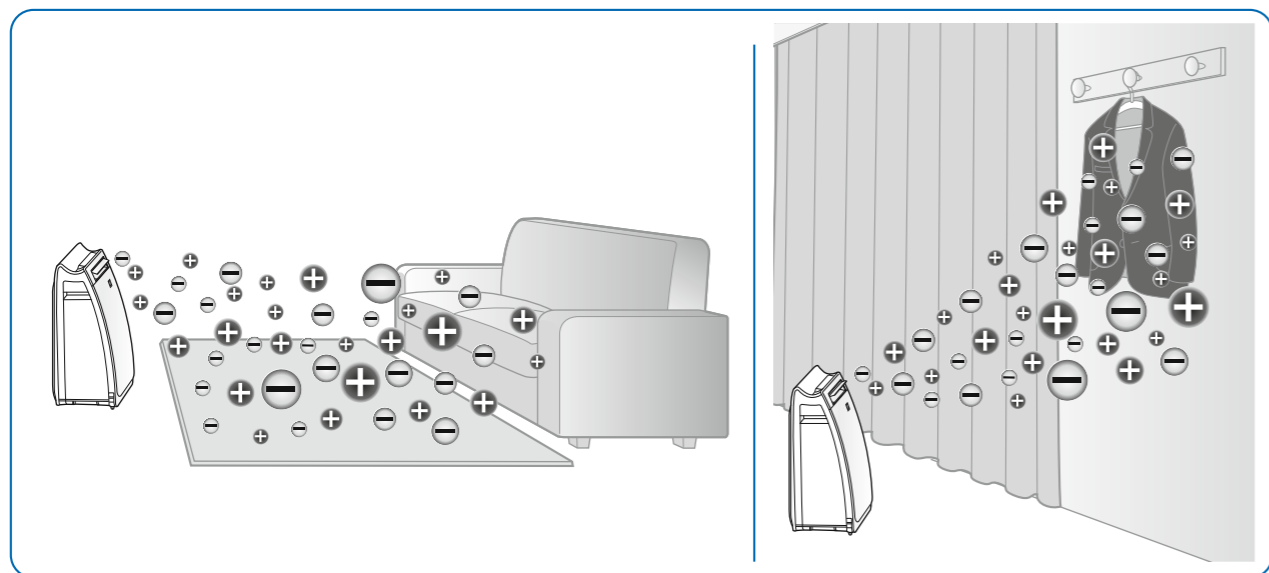
Equipped with High-Density PCI 25000*1

- Same as the ions found in nature
- Air purifying ability is explained*2
- Safety is confirmed*3

High-Density 25000 * 1

● Full Power Spot Mode (P-14)

When you feel sensitive to the odor and/or bacteria that are on the sofa, carpet or curtain, please use this mode.
When the clothes are contaminated with odors such as sweat, cigarettes and food, you may also use this mode.
It will release PCI to the front intensively and clarify the odor and/or bacteria on these items.



● PM2.5 Sensor (P-9)

It displays the approximate amount of PM2.5 by the change of colors of the indicator.

- It displays the approximate amount of PM2.5 by the change of colors of the indicator.
- ★It includes the following substances:
 - smoke of cigarette or incense
 - cooking fume
 - vehicle exhaust
 - smoke of burning material
- The colors of the indicator is for your reference only.

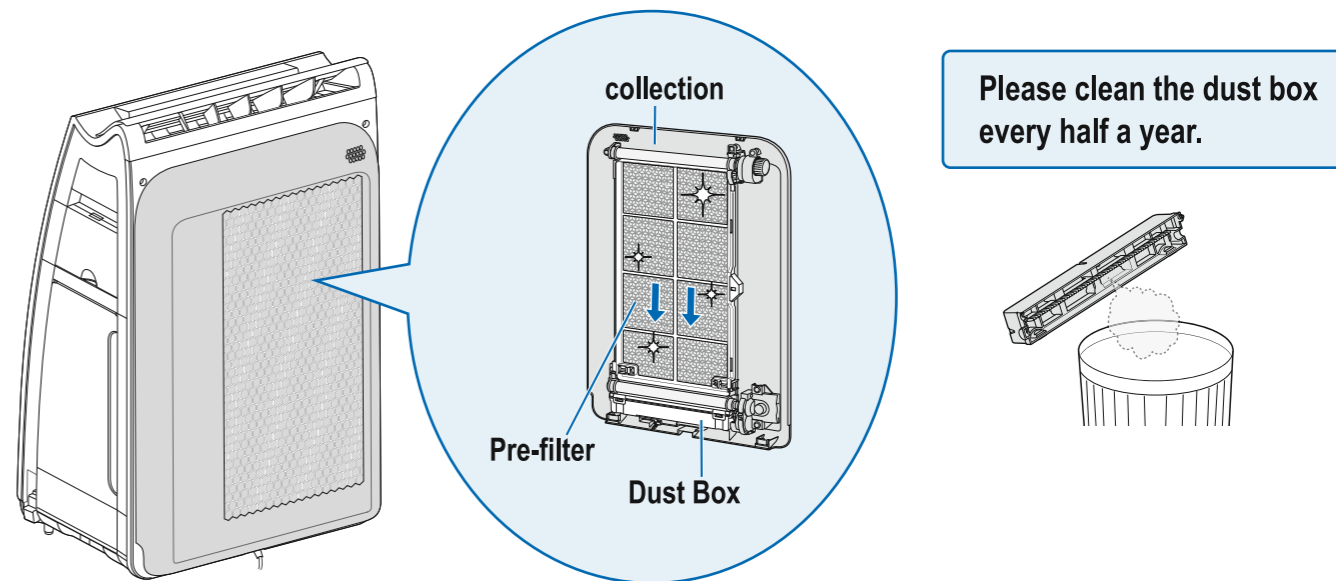
*1 Please refer to the commentson of the cover

*2 Professor Artmann, Aachen University of Applied Sciences, Germany (viruses, molds and bacteria)
Graduate School of Advanced Sciences of Matter, Hiroshima University, Japan (dead bodies of mites and other aerial allergens)

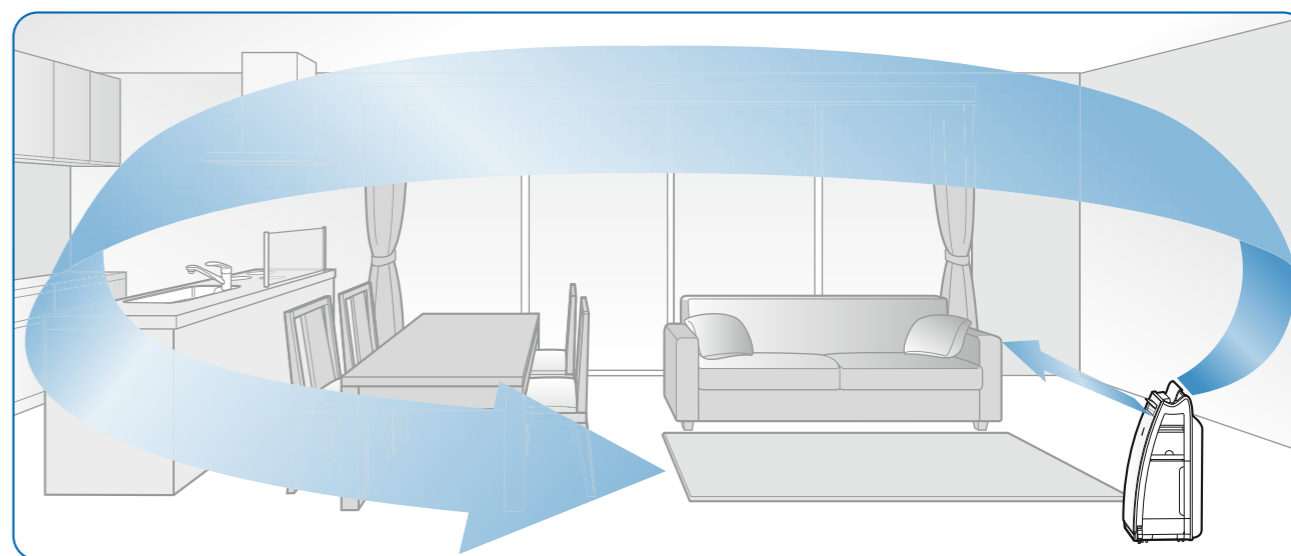
*3 LSI Medience Corporation

● Auto Cleaning of Pre-filter (P-16)

The dust on the pre-filter can be cleaned automatically to maintain the performance of dust collection.



● Full Power Shower purification in an all-round manner



① Completely automatic operation

Smart operation with five sensors.
Regular air circulation even when the air is clean.

(P-12)

② Intensive and fast purification

Dust and odor can be removed quickly

(P-14)

③ Cleaning Assist Mode

Thoroughly collecting dust floating in the air after vacuum cleaner is used.

(P-14)

Precautions Please be sure to follow!

When using electrical appliances, basic safety precautions should be followed as below.

Warning—in order to reduce the risk of electric shock, fire or injury:

- Please read all the instructions in the manual before operating the unit.
- Only use a 220-volt outlet with a polarized receptacle.
- Do not operate the unit if the power cord or the power plug is damaged or the connection to the wall outlet is loosened.
- Remove dust from the power plug regularly.
- **Do not insert fingers or foreign objects into the air intake or air outlet of the unit.**
- **Hold the plug firmly instead of pulling the power cord when unplugging the unit.** Otherwise, electric shock, fire or short circuit may occur.
- **Do not remove the power plug when your hands are wet.**
- **Do not operate the unit near gas appliances or fireplaces.**
- **Remove the power plug from the wall outlet before cleaning the unit or when the unit will not be used for a period.** Otherwise, bad insulation may lead to electric shock, short circuit and/or fire.
- **If the power cord is damaged, it must be replaced by the manufacturer or its agent, Sharp authorized service centers or equivalent qualified personnel so that hazard can be avoided.**
- Do not operate the unit when spraying aerosol pesticides, or there is oil residue, smoke of incense, spark of cigarettes in the room, chemical fumes in the air, or in a highly humidified place such as a bathroom.
- Please take care when cleaning the unit. Strong corrosive cleansers may damage the exterior of the unit.
- This appliance is not intended for use by persons (including children) with reduced physical, sensory or mental capabilities, or lacking of experience and knowledge, unless they have been given supervision or instruction concerning use of the appliance by a person responsible for their safety.
- Children should be supervised to ensure that they do not play with the appliance.
- Only Sharp authorized service centers can repair the unit. If any problems, adjustment, and/or repairs occur, please contact your nearest Sharp Service Center.

Caution—Radio or TV interference

Should this unit interfere with radio or television reception, please try at least one of the following measures to amend it:

- Reorient or relocate the receiving antenna.
- Increase the distance between the air purifier and the radio/TV receiver.
- Do not use the same socket to connect this unit and the receiver.
- If you need help, please contact your dealer or professional radio/TV technician.

Warning: if the power cord is damaged, it must be replaced by the manufacturer, Sharp authorized service centers or equivalent qualified personnel so that hazard can be avoided.

Cautions concerning operation

- Do not block the air intake and air outlet.
- Do not place the unit near or on heating objects, such as stoves, or heaters, or anywhere it may contact steam when operating the unit.
- Please always operate the unit in an upright position.
- **Please hold the handles on both sides of the unit firmly when moving the unit.** Holding the panel when moving the unit may cause the panel to fall off, main unit to drop, and injury.
- **Do not operate the unit without installing the filter, water tank and tray.**
- **Do not wash and/or reuse HEPA filter, deformaldehyde filter and deodorizing filter.**
- **Clean the exterior of the unit with a soft cloth only.** Otherwise, the unit may be damaged or broken. Moreover, it may lead to breakdown of the sensors.
- **Please clean the unit regularly according to different water quality. The lower the purity of water is, the more often you should clean the unit.**
- **Please keep the unit away from water source.**

Installation instructions

- **When operating the unit, please place the unit at least 2 meters away from equipment with electric waves such as televisions, radios or clocks, so that electrical interference can be avoided.**
- **Do not install the unit in the place where the sensor is exposed to direct wind.** Otherwise the unit may not operate properly.
- **Do not install the unit in the place where objects like curtains are near the air intake or air outlet of the unit.** Otherwise, such objects may become dirty or the unit may break down.
- **Do not install the unit in the place where the unit is exposed to condensation or drastic temperature changes.** Please operate the unit in the room temperature between 0°C and 35°C.
- **Please place the unit on a stable surface with sufficient air circulation.** If the unit is placed on a thick carpet, it may cause the unit to vibrate slightly.
- **Do not install the unit in the place where dark smoke will generate (e.g. kitchen).** Otherwise, it may cause the surface of the unit to crack or the sensor to break down.
- **Please place the unit 30-60cm away from the wall.** It may cause the wall behind the air outlet of the unit to become dirty. If the unit is operated in the same location for a long period, please paste a soft rubber pad on the wall in order to prevent the wall from becoming dirty. Moreover, please clean the wall regularly.

Filter instruction

- **Please follow the instruction in this manual to care and maintain the filters correctly.**



- **Before moving it, please make sure the unit is unplugged and the water tank and the tray are removed. Please hold the handles on both sides of the unit when moving it.**

Do not hold the air outlet or louver when moving the unit. (Otherwise, it may lead to leakage, malfunction, damage or injury.)

Figure: Main unit handle

- **Please make sure all casters are unlocked before moving the unit.**

(Otherwise, it may cause damage to the ground or carpet.)

- **Please open windows for ventilation when the unit is operated together with heating machines.**

This unit is not able to remove hazard substances like CO.

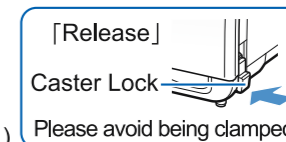
(It may cause suffocation if there is no adequate ventilation.)

- **Please change the water in the water tank and the tray every day. (Tap water). Please care and maintain them regularly. (P-23~24)**

Please empty the water tank and the tray when the humidifying mode is no longer in operation. (Otherwise, the breed of mold and bacteria may lead to stink and allergy to your body.)

Please consult your doctor if any discomfort occurs.

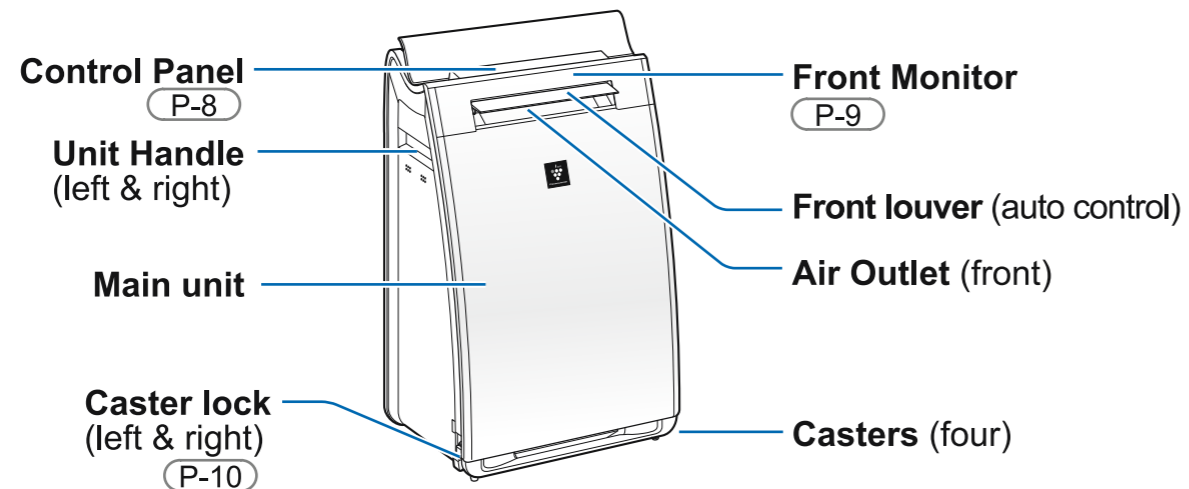
- **Please make sure filters, water tank and tray are installed correctly before operation.** (Otherwise, it may decrease the effect and lead to malfunction.)



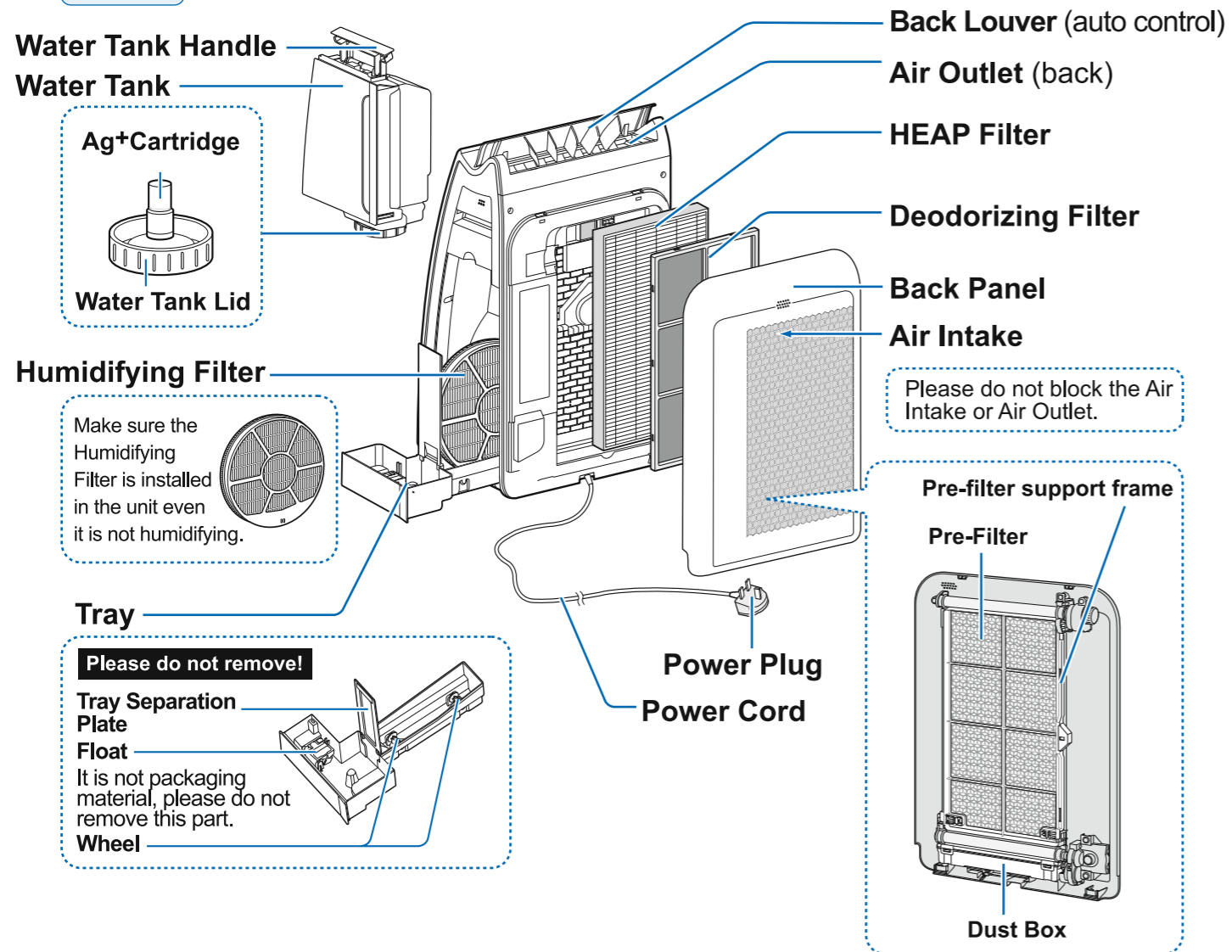
Parts Names

Main Unit

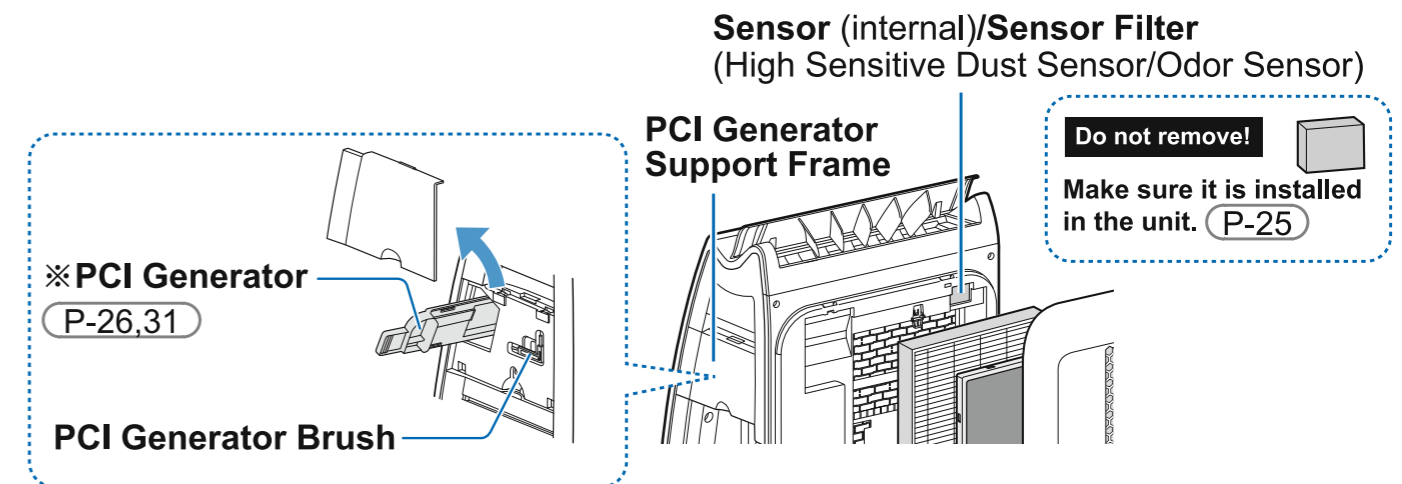
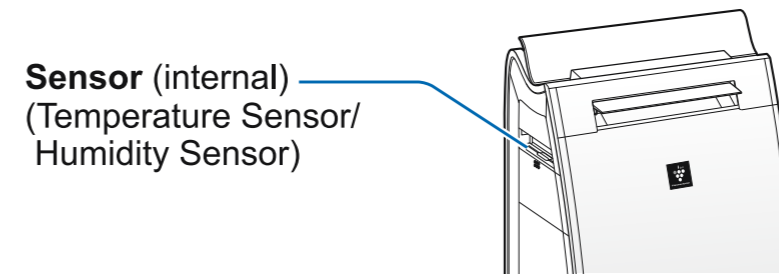
Front



Rear



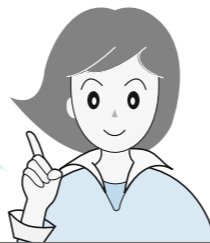
Sensor/PCI Generator



※ Please do not remove it except for maintenance or replacement.
PCI Generator Brush is only for the use of cleaning the PCI Generator.

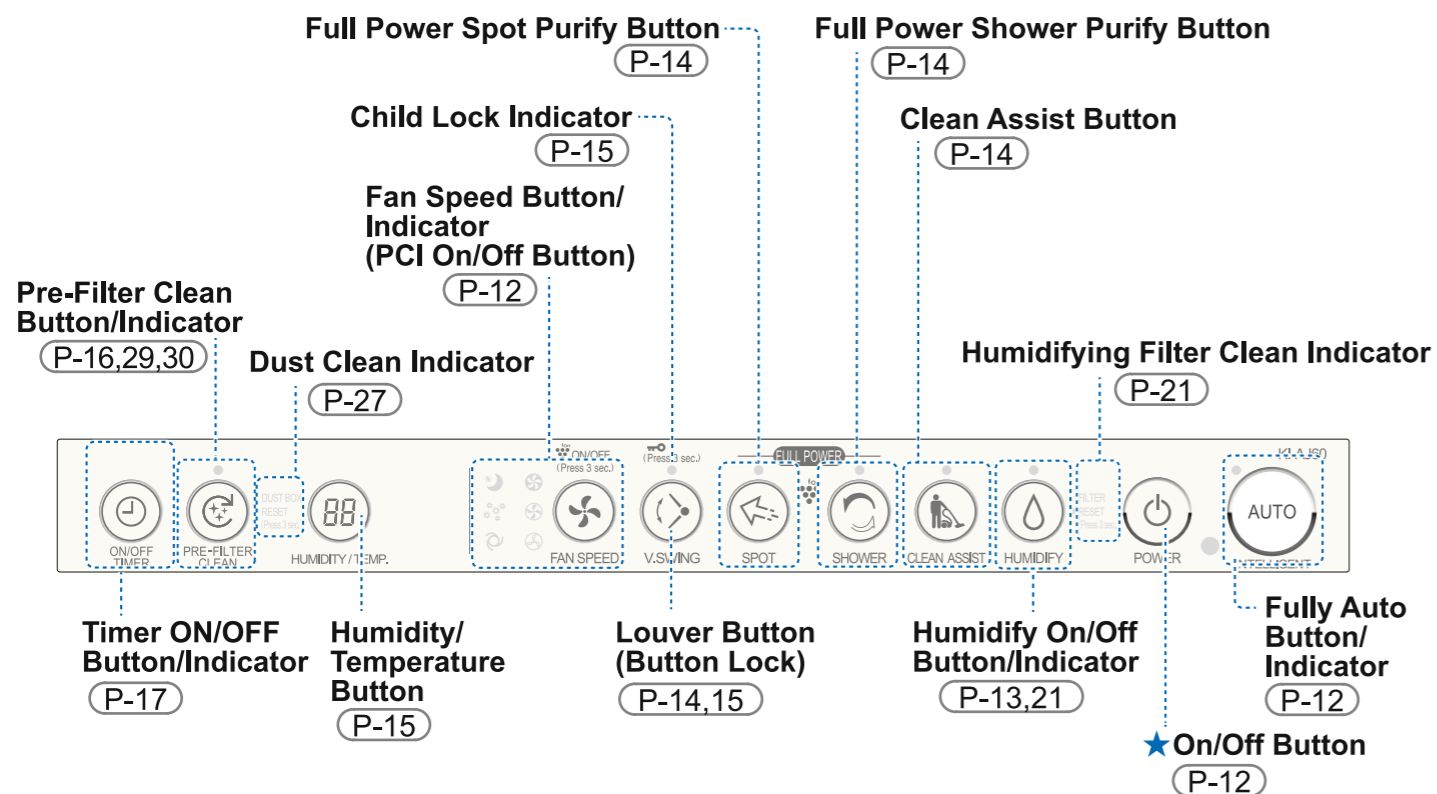
Parts Names (continue)

Please unplug the unit before installing the filters.



Control Panel / Front Monitor

Control Panel



About Sensors

This unit is equipped with 5 sensors and each sensor detects the following substances accordingly.

High Sensitive Dust Sensor (PM2.5 Sensor)	Dust (dirt, feces or dead bodies of mites, spores of molds, pollen), Smoke of Cigarettes, PM2.5 (small particles less than 2.5 μ m) It detects small particles including PM2.5 and bigger particles like pollen.
Oder Sensor	Odor of cigarettes or lit incenses, cosmetics, alcohol and sprayer.
Temperature Sensor /Humidity Sensor	Temperature and humidity of the room
Light Control Sensor	Brightness of the Room

The Monitor displays the air condition, current temperature and humidity of the room monitored by the sensors.

Front Monitor

Dust Indicator (blue-red)

Though High Sensitive Dust Sensor, it analyzes the air pollution level (big and small particles) and displays the result by 5 different colors and the blinking speeds on the Indicator.

Air quality in the room (comprehensive judgement)	Blue (lit on)	Clean
	Orange (blinking)	↓
	Red (blinking fast)	

It indicates the approximate amount of PM2.5 by the change of colors of the Dust Indicator.

It indicates the odor level by the change of colors of the Indicator.

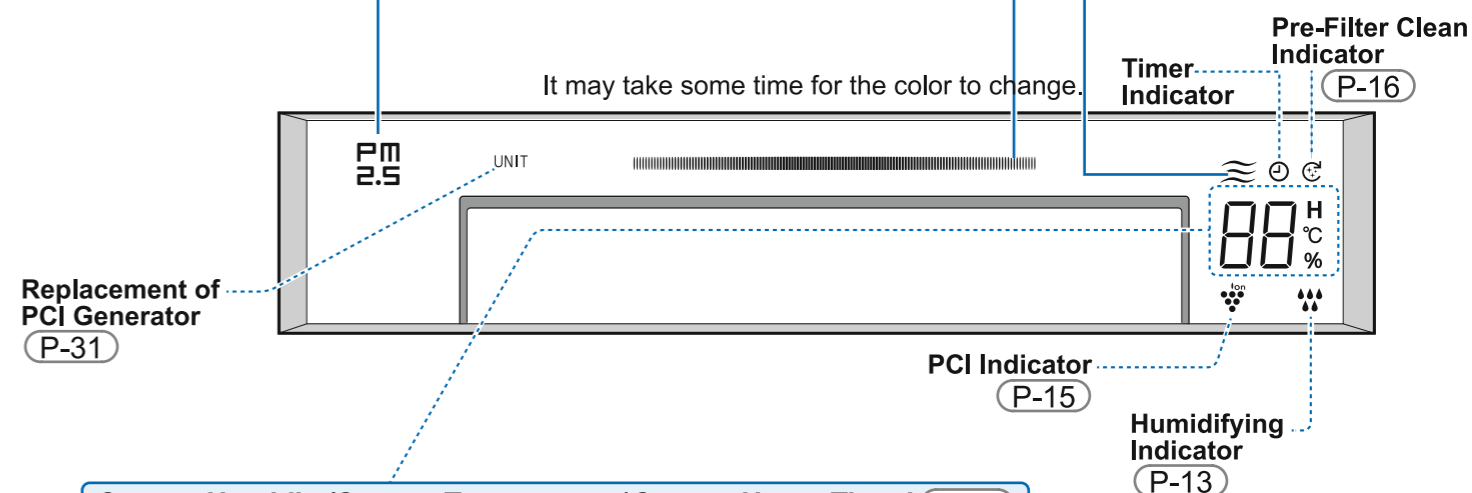
PM2.5 Indicator (Orange, Red)

PM2.5 in the room	OFF	Low
	Orange	↑
	Red	

★The following substance also contains PM2.5:
• cooking fume
• vehicle exhaust
• smoke of burning material

Odor Indicator

Odor in the room	OFF	Low
	Orange	↓
	Red	



Current Humidity/Current Temperature *Current Hours Timed (P-15)

It indicates the approximate current temperature and humidity in the room through the Temperature Sensor and the Humidity Sensor.

Current Humidity (approx.) Indicator (the reading increases or decreases by 1% at a time from 20% to 90%)	20% 55% 90%	• The humidity cannot be set.
	below 20% above 90%	• The unit has no dehumidifying function.
Current Temperature (approx.) Indicator (the reading increases or decreases by 1°C at a time from 0°C to 50°C)	Lo°C 25°C Hi°C	• The temperature cannot be set.
	below -1°C above 51°C	

Current Hours Timed
(The timer is set in hours from 1 to 12 hours)

3^H

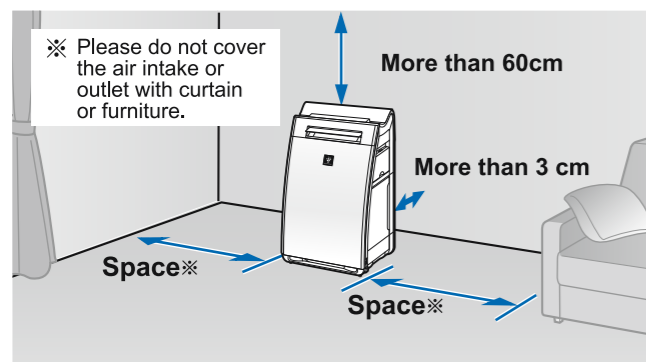
Before Operation

Please unplug the unit before installing the filters.



Installation Instructions

Please locate the unit at the proper place.



The dust collection performance will not be affected even if the unit is located within 3cm away from the wall. However, the wall and the ground may be dirtied. So please keep the unit as far as possible.

- Please operate the unit in the room temperature from 0°C to 35°C. Otherwise dew or frost may influence the life time of the filter or break down the unit.
- Please avoid direct sunlight.
- Please avoid operating the unit near the outlet of air conditioners, heaters or windows. Otherwise, it may lead to change of shape, quality and/or color and mishandling of sensors.
- Please put the unit in flat and stable places. Otherwise the unit may cause injury to the ground.
- Please keep the unit away from dirty walls, curtains and furniture.
- Please keep the floor or wall near the unit clean. Please move the unit and clean the floor regularly.
- Please keep the unit away from the TV sets, radios or wave watches as the unit may interfere the reception.

Caution

- Please do not use cosmetics containing fluoro resin or silicone near the unit. Hair products such as mousse and hair-care liquid, make-up, anti-perspirant, static electricity protectant, anti-water sprayer, brightener, window cleanser, chemical wiper and wax, etc.

If the insulating substances containing fluoro resin or silicone are in the unit, it is hard to generate PCI.

Display the wrong information 「 U3 」

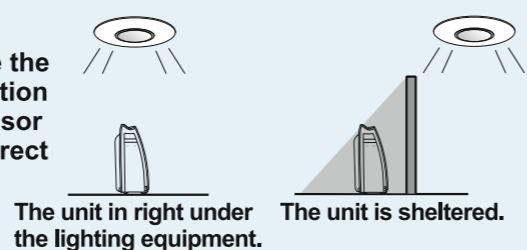
Then, please care and maintain the PCI Generator. (P-26)

Light Control Sensor

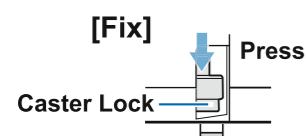
When the light control button is set at Auto Mode, or the unit is operating at Auto Mode or Sleep Mode, the light control sensor will adjust the luminance display according to the room condition automatically.

It occurs that the light control sensor does not display in accordance with the room condition when the unit is located in different places. In this occasion, please relocate the unit. (You may also adjust the sensitivity of the sensor.) (P-17~20)

If the unit is placed like the picture, it may malfunction as the light control sensor cannot monitor the correct situation.



The unit can be fixed on a certain place by the Caster Lock.



- Please locate the unit at a stable place.
- Please make sure the unit is still. It may cost a little bit strength to fix the Caster Lock.

[Unlock]

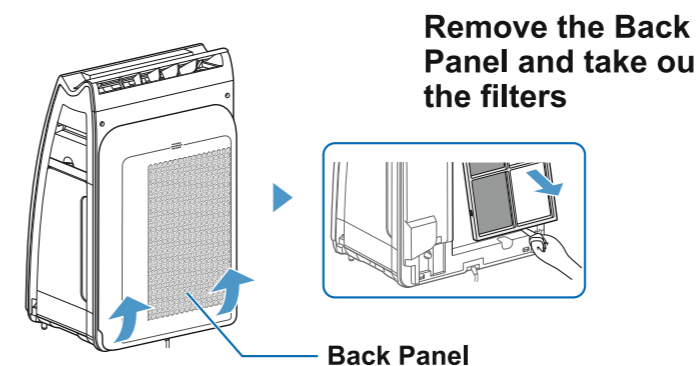


Press firmly the downside of the lock in the direction of the arrow.

Filter installation

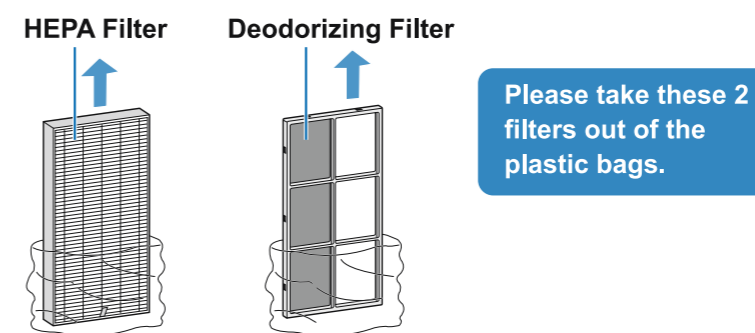
Please install the filters before plugging the unit.

1



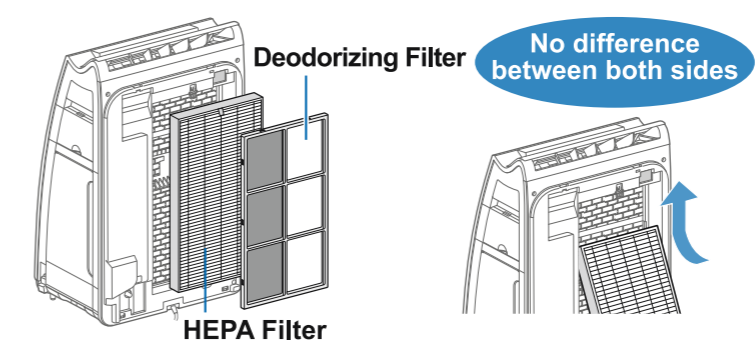
- There are 2 filters in the unit.

2

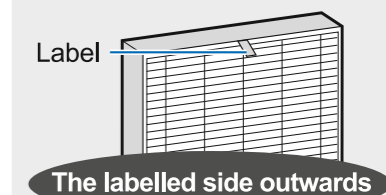


- Please do not wash the HEPA Filter and Deodorizing Filter. (Otherwise these filters may lose effect.)
- There might be slight smell when taking out the filters from the plastic bags, which does not influence the performance of filters.

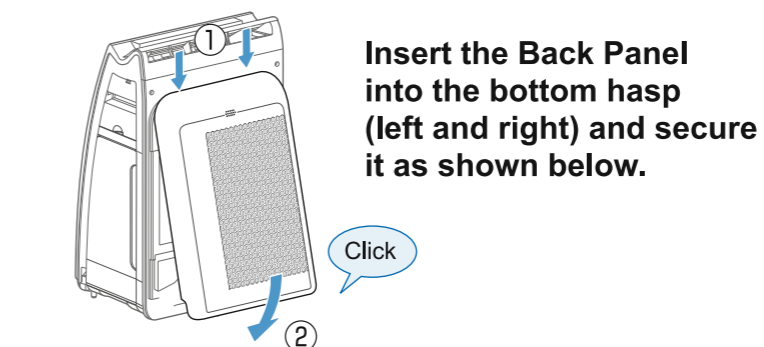
3



- Please install the filters according to the orders shown in the picture. Please put the labelled side outwards when installing the HEPA Filter (the thicker one). If installed in an opposite direction, there might be no effective purifying result.



4



- There is no difference between both sides of the Deodorizing Filter.

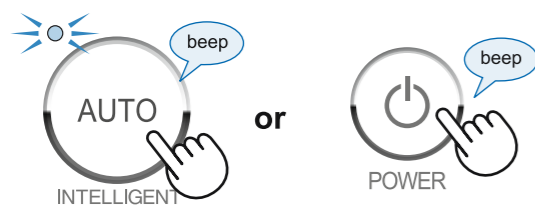
Operation

Plug into the socket.



Power ON/OFF Mode

Operation



When Power is turned on, the front and back louvers will open automatically.

You can choose your favorite operation mode during operation.



Fully auto operation

- It can operate at a fan speed and humidity suitable for the room automatically.
- The auto operation will be suspended for ten minutes when the room has been bright and clean for 3 hours (dust sensor indicator is blue).
- During the auto operation:
 - Fan speed indicator and humidifying indicator are lit.
 - Once the operation mode is changed, the auto operation will stop.



Power ON/OFF

- It will operate at the same mode as the last operation when the plug is inserted into the power socket, the unit will operate at AUTO Mode.
- The Humidifying Indicator will blink in RED when there is no water left in the Water Tank, while Humidifying Mode is set on.



Power ON/OFF



Fan Speed

Setting



Operation You can choose your favorite Fan Speed.

- When the unit is operated at Full Power Spot Mode or Shower Mode, you cannot choose your favorite Fan Speed.



Auto

Fan speed suitable for the room air.

Pollen

When there is too much pollen or dust

High Sensitive Dust Sensor will be turned to HIGH sensitivity automatically, and it will purify the room by detecting the room condition. (Fan Speed is a little bit stronger than Auto Mode)

Sleep

When you want to have a rest, and require a quiet and dark environment

Fan Speed will be set at Auto to control the noise. When the lights are out, the Indicator light will be off. (The lights on the Control Panel will still be on when the brightness of the indicator on Monitor is set at Auto.)

Mute

the fan speed operates quietly.

Medium

the fan speed operates at Medium Speed.

High

the fan speed operates at High Speed (the sound will increase).

P-17~20

Humidifying Mode

Please fill tap water in the Water Tank if you want to set on the Humidifying Mode.

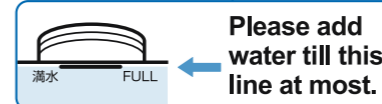
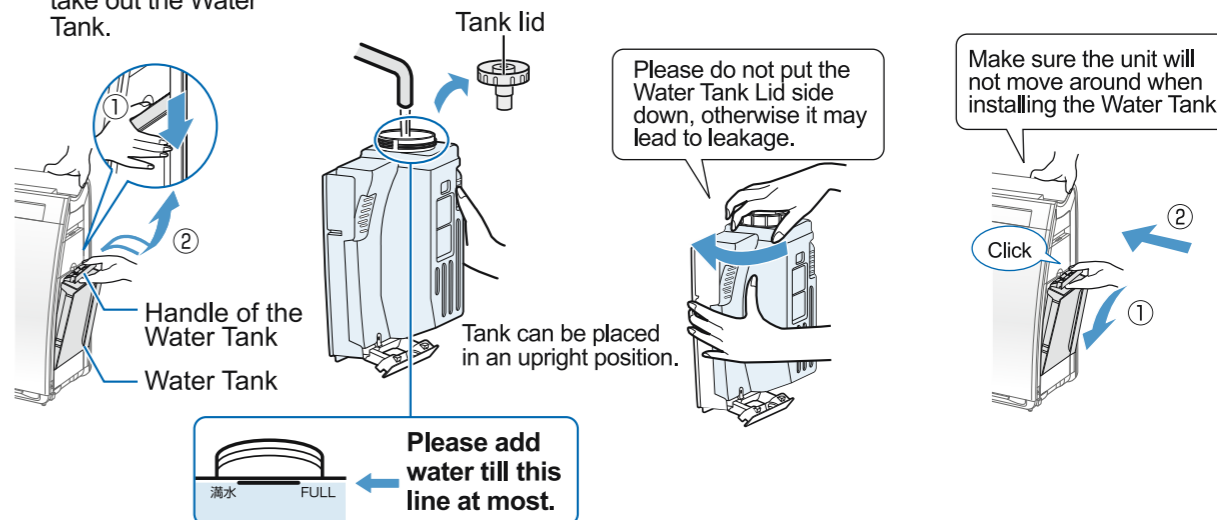
Fill water

- Please push down the Handle of the Water Tank.
- Pull outwards to take out the Water Tank.

Take off the tank lid, empty the Water Tank and fill in tap water after cleaning.

Close the Water Tank lid firmly

Install the water tank to the unit



Caution

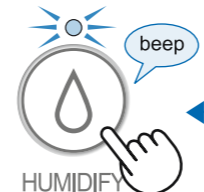
- Please use tap water only, otherwise it may cause breed of bacteria.
- Please do not use hot water ($\geq 40^{\circ}\text{C}$), sesame oil, chemicals, sewage, abstergent or aromatic, otherwise it may cause odor, crack or leakage.

When Humidifying Mode is set on, it will humidify the room until it reaches a proper humidity. (You cannot choose your favorite Humidity.)

Humidifying ON / OFF

(In operation)

On beep



Off beep



- It will adjust the humidity as illustrated at right. (the figure in the bracket is the figure when Fan Speed is set at Sleep Mode)
- When Fan Speed is set at Mute, Medium or High, it will keep humidifying all the time. When it is on Clean Assist Mode, humidifying will stop.

Room temperature	Room humidity
~18°C	65%(65%)
18°C~24°C	60%(65%)
24°C~	55%(60%)

Humidifying Indicator

- Off Not humidifying
- White Humidifying
- Red Filling Water

- When the Water Tank is empty, the Humidifying Indicator will blink in RED, while the unit will continue to operate without Humidifying.
- Once it reaches the proper humidity, the Humidifying Indicator will turn off. (Only when the unit takes control of the adjustment of humidity.)

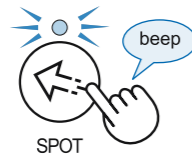


Caution

- According to different room size and condition, the humidification effect may not be that perfect or the humidification amount may be excessive.
 - If it cannot reach the proper humidity...Please set Fan Speed at High or Medium.
 - If the humidity is excessive...Please turn off the Humidifying Mode.

Operation

Operation (continue)

Full Power Spot Purify Mode/Full Power Shower Purify Mode/Clean Assist Mode

	Full Power Spot Purify Mode	Full Power Shower Purify Mode	Clean Assist Mode
Operation			
When you want to	Remove the odor and bacteria attached to sofa, carpet and/or curtain, PCI is released to the front intensively.	Remove the polluted air from the room quickly <ul style="list-style-type: none"> • A solution to pollen when you go back home; • Laundry are taken out of the Washer; • A solution to the odor after cooking. The unit will release PCI at the highest fan speed, purifying the air as well as controlling static electricity.	Clean the flying dust after a vacuum cleaner is used. The unit can prevent the dust from falling while purifying the air.
Back panel	Closed	Open	Open and closed alternatively
Front panel	Swing (changeable)	Closed for 10 minutes and open for 50 minutes	
Fan speed	High	Highest speed for 10 minutes Then high speed for 50 minutes The sensitivity of High Sensitive Dust Sensor will be set at [High] automatically	From high speed to the highest speed (The humidifying mode is off)
Operation time	8 hours	60 minutes	15 minutes

Caution



- PCI is automatically set at [On] and cannot be turned off.
- When the monitor displays 「E9」, 「U3」 or 「C8」, PCI will be no longer released, but the operation continues.
- When the unit is at Full Power Spot Purify Mode and you press this button again, you will hear two Beeps and the unit will resume the operation that was set on previously.
- When the operation is stopped, and the operation button is pressed again, the unit will resume its former operation.
- Even the unit is set at Auto Recovery P19, it will resume its former operation after power failure. (P-19)

Change of Louver Direction

The swing angle of the Front Louver can be adjusted.

Swing/Stop

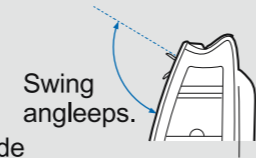
(In operation)

[Swing]  **[Stop]** 

• When the Swing button is pressed during operation, the front louver will start swinging after a beep.

• The angle cannot be adjusted when the unit is on Full Power Spot Purify Mode, Full Power Shower Purify Mode or Clean Assist Mode.

• If the Swing button is pressed when the louver is swinging, the Front Louver will stop swinging after two beeps.



Caution

- The swing angle will be different on different modes.
- The Back Louver cannot be adjusted.
- Do not change the angle of Back Louver manually, otherwise it may lead to failure or injury.

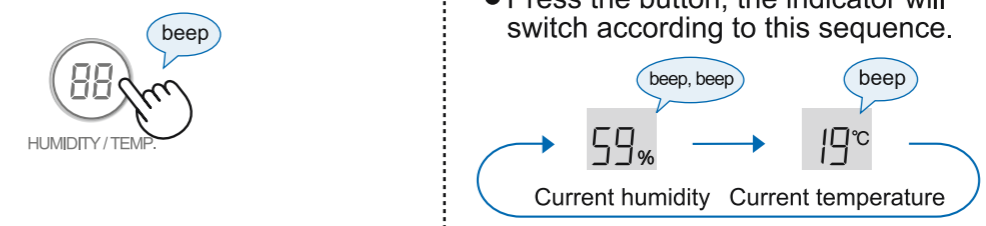
Function

Temperature/Humidity Indicator Switch

When showing the current humidity (approx.) and temperature (approx.)

Switch

(Operation)





• Press the button, the indicator will switch according to this sequence.

• Current humidity and current temperature are for your reference only.

Child Lock

Avoid mishandling by children.

Set/Cancel

[set]  **[cancel]** 

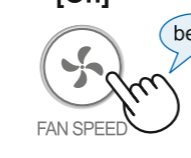
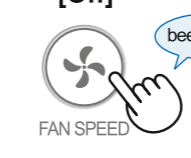
press for at least 3 seconds **press for at least 3 seconds**

- Once the Child Lock is set, no button is functional except the lock cancelling. If other buttons are pressed, you will hear three beeps indicating invalid handling.
- Once the Power Cord is taken off, the setting will be cancelled. (However, if the unit is set at Auto Recovery Mode, the Child Lock cannot be cancelled even unplugging the unit.) (P-17~20)


PCI (Ion) ON/OFF

ON/OFF

(In operation)

[On]  **[Off]** 

press for at least 3 seconds **press for at least 3 seconds**

• When the PCI (Ion) Mode is set at OFF, the unit will stop releasing PCI and the PCI Indicator will turn off. 

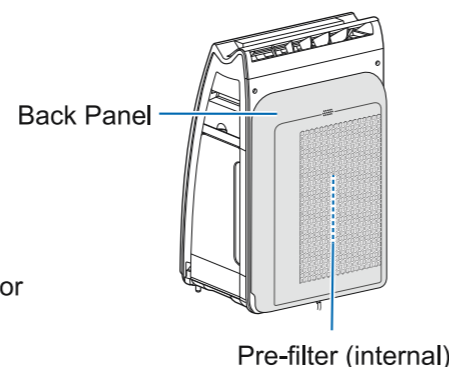
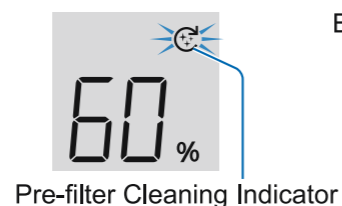
Function (continue)

Auto cleaning of the Pre-filter

Once the auto cleaning is set, the air purifying operation will be suspended every 48 hours for the cleaning of the Pre-filter (the cleaning lasts 8 minutes).
The auto cleaning of the Pre-filter is a default setting.

The Pre-filter Cleaning Indicator light is lit on Monitor.

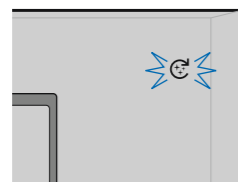
How to change the setting (P-17~20)



If the auto cleaning is cancelled, the unit will clean the Pre-filter and collect the dust automatically every month (about 720 hours).

Manual cleaning of the Pre-filter

Manual cleaning

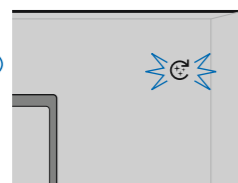
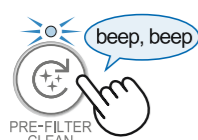


- The manual cleaning can also be set on the Auto cleaning of the Pre-filter [Set/Cancel] mode.
- The auto cleaning starts when the Pre-filter Cleaning Indicator on the Control Panel is on and the Pre-filter Cleaning Indicator on the Monitor is blinking.
- If the auto cleaning button is pressed when the unit is in operation, the air purifying operation will be suspended for the cleaning of the Pre-filter. After the cleaning is finished, the unit will resume the air purifying operation.

Halt of the auto cleaning of the Pre-filter

Halt

(In auto cleaning)



- Once the auto cleaning is halted, the Pre-filter will return to its original position. (After it returns to its original position, the indicator will be off.)

Caution

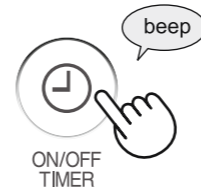
- The auto cleaning will not start when
 - The unit is on Spot Purify/Shower Purify/Clean Assist mode.
 - The dust sensor indicator is not blue. The room is [dark].
 After the Spot Purify/Shower Purify/Clean Assist mode finishes, the dust sensor indicator is blue, and it has been bright in the room for over 10 minutes, the Pre-filter auto cleaning will start. (If it has been 720 hours since last auto cleaning, the auto cleaning will start anyway.)
- If you want to stop the auto cleaning of the Pre-filter, you may press Power ON/OFF button. (The Pre-filter will not return to its original position until next auto cleaning finishes.)

ON/OFF Timer

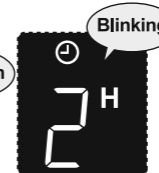
Once set, it will operate or stop as scheduled automatically.

On

(Not in operation)



Light on



After each press, the Timer indicator will blink with one beep. You can choose your favorite time.

0H → 1H → 2H → 3H → 4H → 5H → 6H → 7H → 8H → 9H → 10H → 11H → 12H

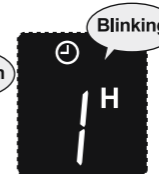
- If there is no operation in 3 seconds, the setting will be finished with a beep. The Timer Indicator Light will be on and display the remaining hour before the operation starts.
- You may reset the timer by pressing the ON/OFF Timer again.

Off

(In operation)



Light on



After each press, the Timer indicator will blink with one beep. You can choose your favorite time.

0H → 1H → 2H → 3H → 4H → 5H → 6H → 7H → 8H → 9H → 10H → 11H → 12H

- If there is no operation in 3 seconds, the setting will be finished with a beep. The Monitor will be back to its previous status.
- After the setting is done, press once the ON/OFF Timer, the remaining hour of the operation will show, and press twice, you may reset the Timer.

Mode Settings

Function & Mode Settings

(The highlight part is the default status.)

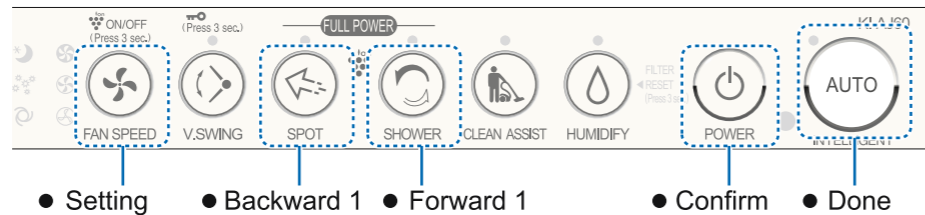
Function No	Comments	Setting Serial No
Light Control F1	It adjusts the brightness of the monitor. (P-19)	01 (Auto) → 02 (Dim) → 03 (Off)
Water-filling Indicator F2	It indicates through the sound when adding water. (P-19)	01 (without Indication Sound) → 02 (with Indication Sound)
Auto Recovery F3	The unit will return to its former operation once it resumes from the power failure. (P-19)	01 (Off (cancel)) → 02 (On (set))
Sensitivity of Light Control Sensor F4	The sensitivity of Light Control Sensor can be adjusted. (P-20)	01 (Low) → 02 (Standard) → 03 (High)
Sensitivity of High Sensitive Dust Sensor F5	The sensitivity of High Sensitive Dust Sensor can be adjusted. (P-20)	01 (Low) → 02 (Standard) → 03 (High)
Sensitivity of Odor Sensor F6	The sensitivity of Odor Sensor can be adjusted. (P-20)	01 (Low) → 02 (Standard) → 03 (High)
Auto cleaning of Pre-filter F7	Auto cleaning of Pre-filter can be set. (P-20)	01 (On (set)) → 02 (Off (cancel))

Function

Function (continue)

Mode Settings

How to Change the Setting



- 1 Not in Operation**

Press for at least 3 seconds

F1 Display Functional Code

Mode setting

- 2 Choose the mode that you want to use**

Press this Button, it will forward one step.

Press this Button, it will backward one step.

Confirm

It displays the code of the mode chosen.

- 3 Choose the mode that you want to use**

(e.g.) when you want to change the brightness of the sensor indicator.

Press this Button, it will forward one step.

Press this Button, it will backward one step.

Confirm

It displays the code of the mode chosen.

- 4 Mode setting finished.**

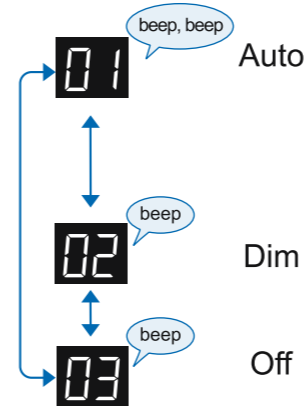
Lights off.

Caution

- If you want to continue with other functional settings, you can do step 2 and step 3 again.
- If there is no operation within 1 minutes, you will hear Beep from the buzzer and the Indicator Light of the Monitor will turn off.
- The unit will memorize your setting automatically even when the power plug is taken out.

Mode Settings (Operating methods refer to P-18)

Brightness of Light Control Sensor Indicator **F1**



It adjusts the brightness of the Monitor automatically according to the status detected by the Light Control Sensor. (Default)

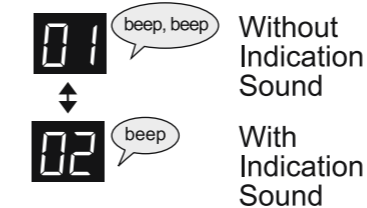
- When it is bright in the room displays in Bright (at SLEEP Mode, the display will be dim)
- When it is dark in the room----displays in Dim (at SLEEP Mode, the Monitor will be off)

It displays in a dim way.

The Monitor goes off.

- The Humidifying Indicator will still blink in a dim way if the Water Tank is empty even the Monitor Light is set at OFF.
- The PCI Generator Replacement Indicator will blink in a dim way if the PCI Generator need to be replaced.
- If the Monitor Light is set at OFF, the Monitor will be Dim for 3 seconds before going off.

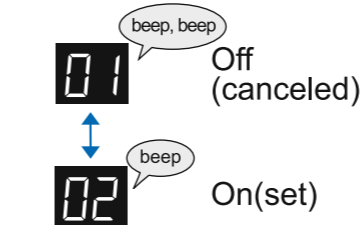
Water-filling Indicator **F2**



The Humidifying Indicator blinks with no sound. (Default)

The Humidifying Indicator blinks with a sound of beep-beep-beep which lasts for 10 seconds. When SLEEP Mode is set on, once the Light Control Sensor detects that it is dark in the room, it will not beep.

Auto Recovery **F3**



When there is a power failure, or the unit is unplugged during operation, it will not restart to operation even the power is back. (Resume to default setting)

When there is a power cut, power failure or the unit is unplugged during operation, it will resume to your former operation and settings once the power is back.

Function (continue)

Mode Settings (Operating methods refer to P-18)

Sensitivity of Light Control Sensor F4

- 01** beep Low The Front Monitor still displays in bright even it turns dark in the room.

- 02** beep, beep Standard **【Default】**

- 03** beep High It is bright in the room while the Front Monitor displays in dark.

Sensitivity of High Sensitive Dust Sensor F5

- 01** beep Low When PM2.5 Indicator or Dust Indicator turns to RED frequently.

- 02** beep, beep Standard **【Default】**

- 03** beep High When PM2.5 Indicator doesn't light up, and Dust Indicator stays in Blue.

Sensitivity of Odor Sensor F6

- 01** beep Low When Dust Indicator turns to RED frequently.

- 02** beep, beep Standard **【Default】**

- 03** beep High When Dust Indicator stays in Blue.

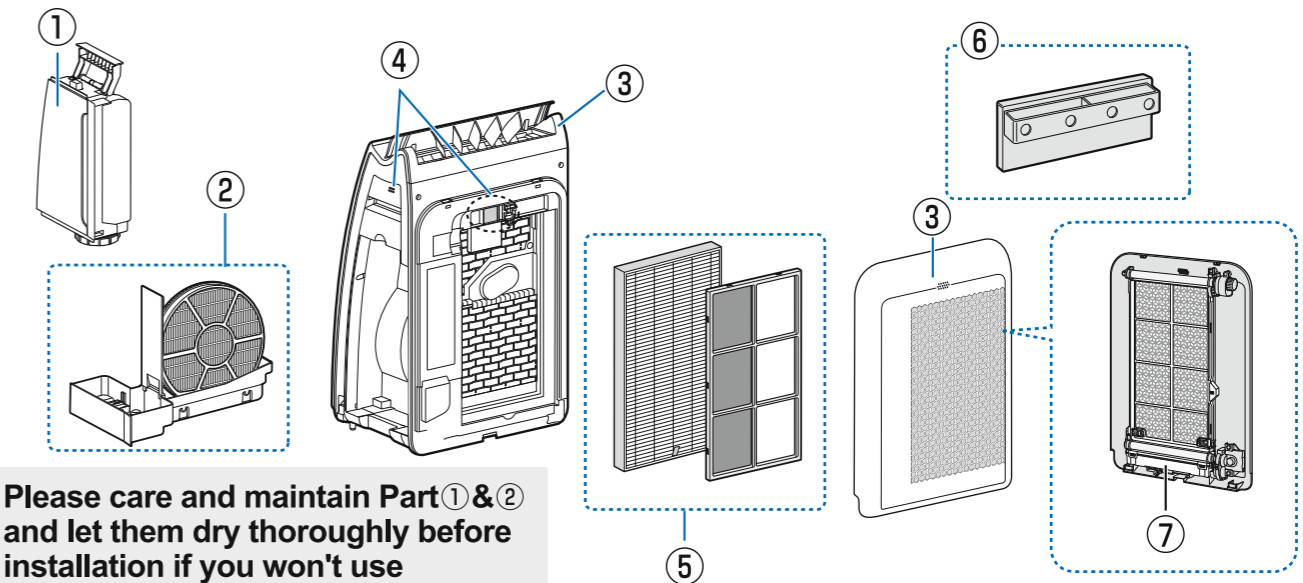
Auto Cleaning of the Pre-filter F7

- 01** beep, beep On(set) The dust on the Pre-filter will be cleaned every 48 hours. **【Default】**

- 02** beep Off(canceled) **No auto cleaning for the Pre-filter. Please make the cleaning setting.**
 - In order to keep the air clean, the unit will clean the Pre-filter and collect the dust automatically one month (about 720 hours) after previous cleaning.

Care and Maintenance

Maintenance location



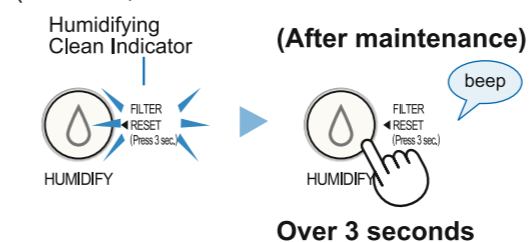
Please care and maintain Part ① & ② and let them dry thoroughly before installation if you won't use Humidifying Mode for a long time.

Maintenance Location	Maintenance Frequency	When care & Maintenance Indicator lights up	When it is smelly at the air outlet
① Water tank P-23	Every time when filling water	○	○
② Humidifying Filter, Tray P-23	Once a month	○	○
③ Main Unit, Back Panel P-25			—
④ Sensors P-25			—
⑤ HEPA Filter, Deodorizing Filter P-25	—	—	○
⑥ PCI Generator P-26	Every six months	—	—
⑦ Dust Box P-27			

Humidifying Clean Indicator Light

※ The light is off when there is no water filled.

When the cumulative operation period or the water containing period is more than 720 hours, the indicator will light up. (However, it will not calculate the time when the unit is unplugged.)



After care and maintenance, please keep pressing Humidifying Button for more than 3 seconds so that the Humidifying Clean Indicator can turn off.

- After care and maintenance, even the Humidifying Clean Indicator is not on, please press the Humidifying Button for more than 3 seconds.