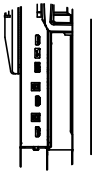


SMART Board MX086-V2 Interactive Display[®]™ SBID-MX086-V2

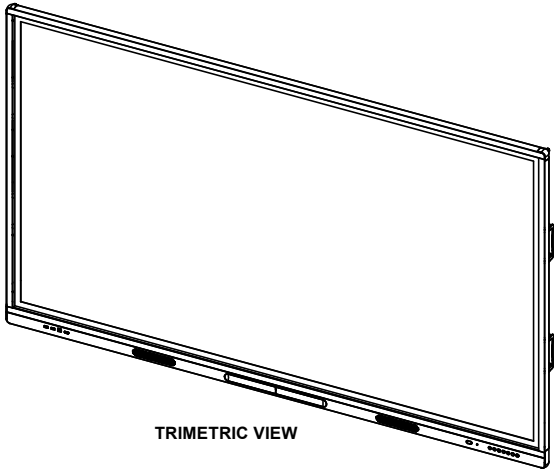
NOTE:
1. PANEL WEIGHT WITHOUT CABLES OR ACCESSORIES APPROXIMATELY 172.4 LBS (78.2 KG)
2. ENSURE MOUNTING BRACKETS AND WALL ARE RATED FOR LOAD



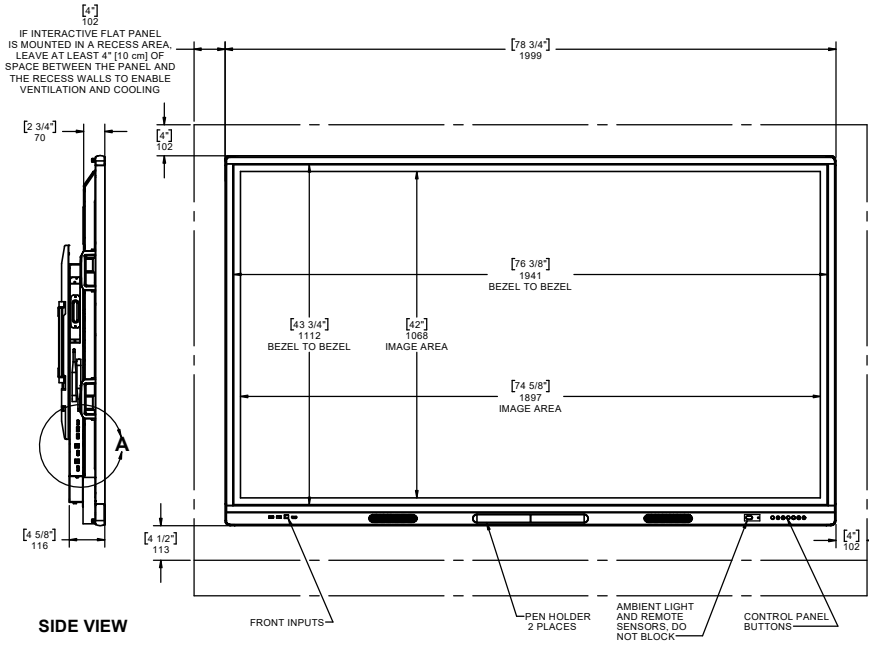
TOPVIEW



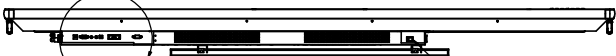
DETAIL A
LEFT CONNECTION
PANEL



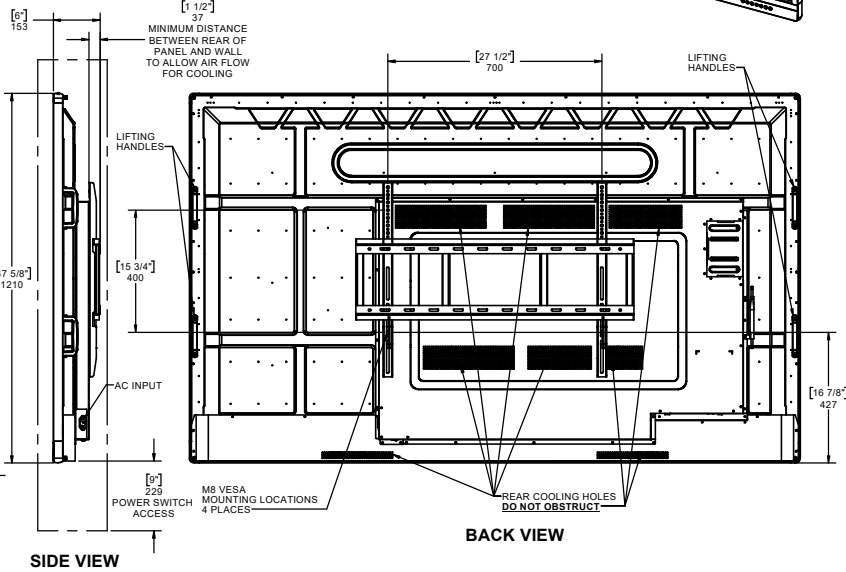
TRIMETRIC VIEW



SIDE VIEW



BOTTOM VIEW



SIDE VIEW

BACK VIEW



DETAIL B
BOTTOM CONNECTION
PANEL

These drawings are for outline and installation purposes only.

All dimensions are given in millimeters (inches).

Dimensions are subject to change without notice.

All dimensions +/-3mm (1/8")

NOTE: DO NOT SCALE

The contents of this document are compiled from a variety of documents to provide a consolidated view of key criteria. Should there be any information you need that is not adequately captured in either this document or the related documents, please contact us at cadrequest@smarttech.com for assistance.

This document is uncontrolled at the time of printing. Please ensure you are using the latest revision available.



3636 Research Road NW
Calgary, Alberta T2L 1Y1
CANADA

© 2019 SMART Technologies ULC.
All rights reserved.
The SMART logo, smarttech and all SMART taglines are trademarks or registered trademarks of SMART Technologies ULC in the U.S. and/or other countries.

This product and/or use thereof covered by one or more of the following U.S. patents.

www.smarttech.com/patents

Page: 1 OF 3

Description:
Ecosystem Drawing, SBID-MX086-V2

Drawing Number: 6010373 | Revision: 01

SMART Board MX086-V2 Interactive Display[®]™ SBID-MX086-V2

These drawings are for outline and installation purposes only.

All dimensions are given in millimeters (inches).

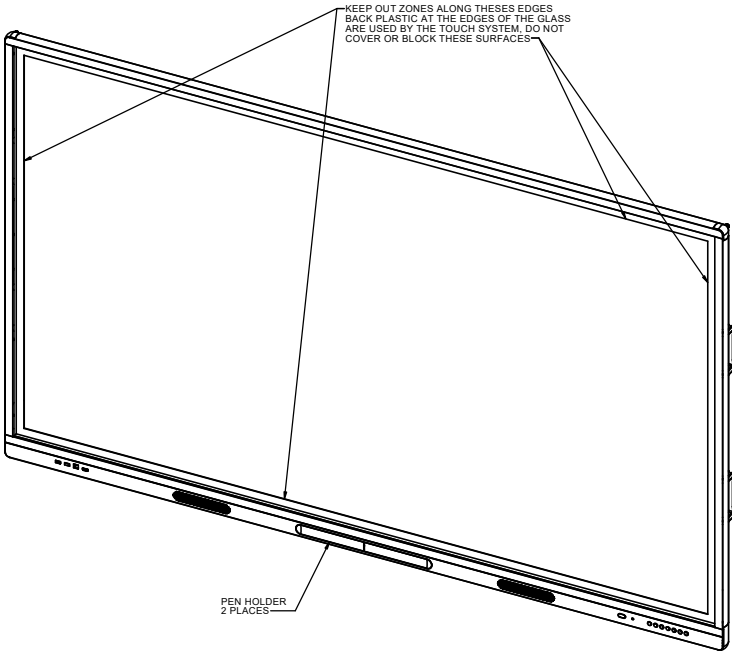
Dimensions are subject to change without notice.

All dimensions +/-3mm (1/8")

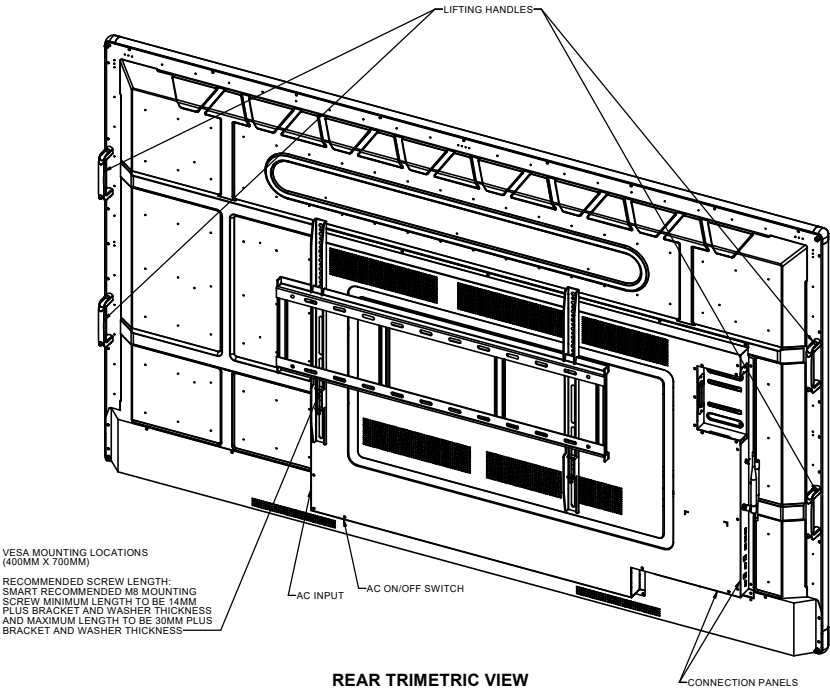
NOTE: DO NOT SCALE

The contents of this document are compiled from a variety of documents to provide a consolidated view of key criteria. Should there be any information you need that is not adequately captured in either this document or the related documents, please contact us at cadrequest@smarttech.com for assistance.

This document is uncontrolled at the time of printing. Please ensure you are using the latest revision available.



FRONT TRIMETRIC VIEW



REAR TRIMETRIC VIEW

SMART[®]

3636 Research Road NW
Calgary, Alberta T2L 1Y1
CANADA

© 2019 SMART Technologies ULC.
All rights reserved.
The SMART logo, smarttech and all SMART taglines are trademarks or registered trademarks of SMART Technologies ULC in the U.S. and/or other countries.

This product and/or use thereof covered by one or more of the following U.S. patents.

www.smarttech.com/patents

SMART Board MX086-V2 Interactive Display[®]™ SBID-MX086-V2

These drawings are for outline and installation purposes only.

All dimensions are given in millimeters (inches).

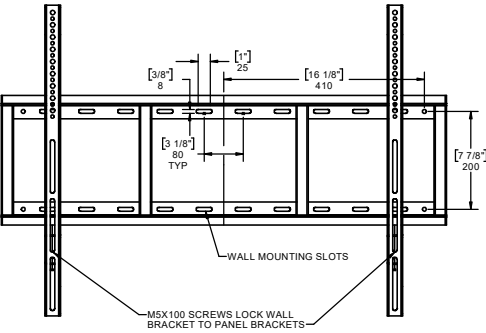
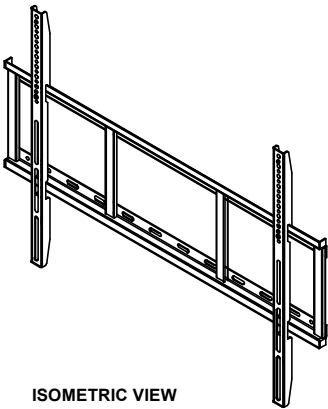
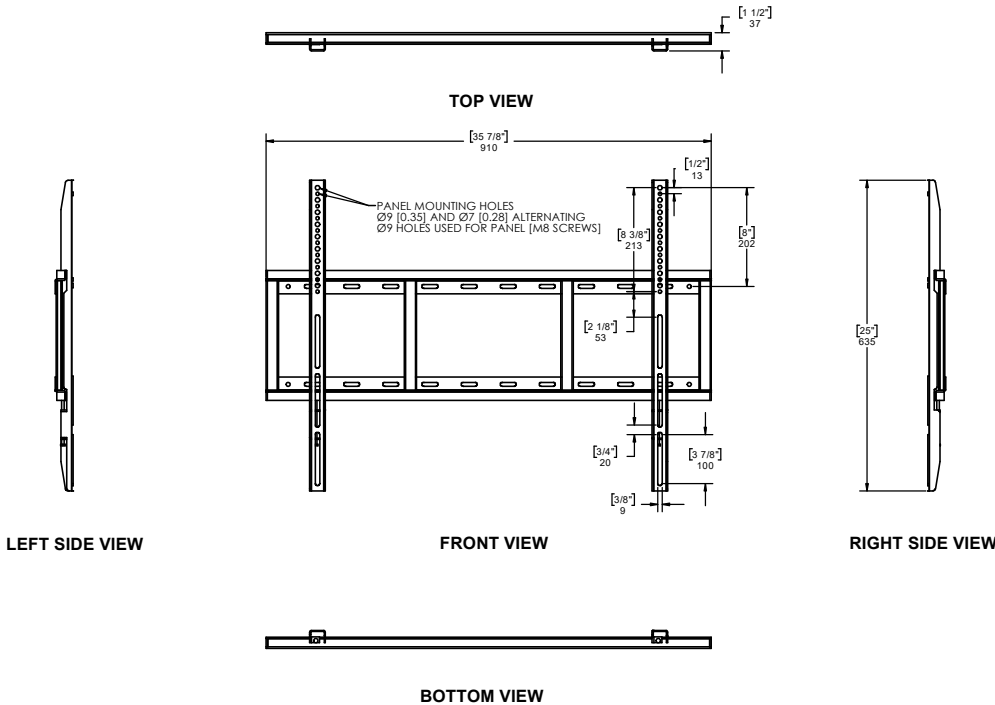
Dimensions are subject to change without notice.

All dimensions +/-3mm (1/8")

NOTE: DO NOT SCALE

The contents of this document are compiled from a variety of documents to provide a consolidated view of key criteria. Should there be any information you need that is not adequately captured in either this document or the related documents, please contact us at cadrequest@smarttech.com for assistance.

This document is uncontrolled at the time of printing. Please ensure you are using the latest revision available.



- NOTES:
1. THE WALL MOUNT IS INTENDED FOR USE WITH THE MX2-75/86 PRODUCTS ONLY.
 2. THE WALL MOUNT IS INTENDED FOR WOOD STUD AND SOLID CONCRETE WALLS ONLY. MOUNTING ON OTHER WALL TYPES IS AT THE RISK OF THE INSTALLER
 3. HARDWARE FOR MOUNTING THE WALL BRACKET TO THE WALL IS NOT SUPPLIED
 4. THE INSTALLER IS REQUIRED TO ENSURE THE CONSTRUCTION OF THE WALL AND HARDWARE USED WILL BE ABLE TO SAFELY HOLD THE WEIGHT OF THE PRODUCT
 5. WEIGHT OF WALL MOUNT IS 4.2KG (9.3 LB)

SMART[®]

3636 Research Road NW
Calgary, Alberta T2L 1Y1
CANADA

© 2019 SMART Technologies ULC.
All rights reserved.
The SMART logo, smarttech and all SMART taglines are trademarks or registered trademarks of SMART Technologies ULC in the U.S. and/or other countries.

This product and/or use thereof covered by one or more of the following U.S. patents.

www.smarttech.com/patents

Page: 3 OF 3

Description:

Ecosystem Drawing, SBID-MX086-V2

Drawing Number: 6010373

Revision: 01