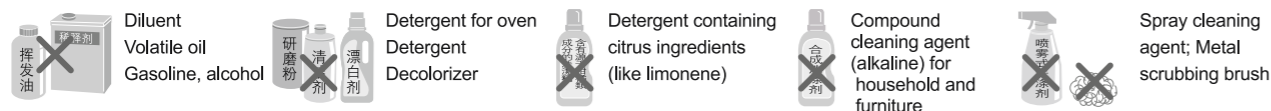


Care and Maintenance (continue)

Maintenance Location

Do not use the following items when cleaning the main unit and filters.
(Scratch on the surface and inner (precision parts) liquid leak are reasons of malfunction)



HEPA Filter, Deodorizing Filter

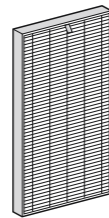
Air purifier is a machine to collect (remove) dust or smell in the room. Strong smells like fragrance, perfume, cigarette or barbecue in the room will adhere to the filter and odor will be generated in several weeks/months. Careful cleaning, no matter how frequent, can control the generation of odor and lengthen the life span of the filter. (P-28)

If it is used in the environment where there are strong smells, frequent ventilation of the room is suggested.

(Deodorizing takes more time than dust removing.)

HEPA Filter

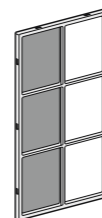
Capture PM2.5, pollen, sensitizers (feces and bodies of acarian), mould, dust, dirt, cigarette smoke (particle), pet's hair, etc.



- Color changing (grey, earthy yellow, etc.) will happen sometimes as it collects small dust and dirt, which is normal. Frequent cleaning and maintenance will lengthen its life time.

Deodorizing Filter

Absorb cigarette smell (odor), toilet smell, household garbage smell, pet smell, and hazardous gases like vehicle exhaust



- It is not able to remove all the hazardous ingredients (CO from cigarette) and constant smell (formaldehyde, pet smell, etc.)

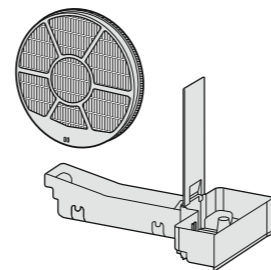
Humidifying Filter, Tray

It extracts and vaporizes water from the tray so as to humidify the air passing through.

When the mineral elements in the water adhere to the filter's surface, they will absorb smell in the room. Odor will be generated, when the filter is dry (when it is not humidifying). Please clean the filter at this time. (The frequency depends on the water quality.) (P-23)

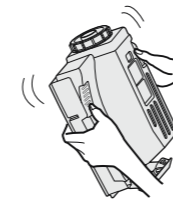
No matter if the care and maintenance indicator light is on or not, to rinse the filter or the tray will make it hard for mineral elements to adhere and hence to control the generation of odor.

- Sometimes, we can see red, yellow or white substance adhere to filter and tray, which is caused by mineral elements or iron in water and is normal.



Water tank

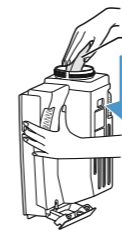
Water injection every time



Fill a small amount of water and shake it to clean

- Do not put it upside down. (otherwise, it may cause leakage)
- Do not grasp the handle to shake and clean

When sensitive to dirt or smell



Use a sponge pad

Clean the lid with a toothbrush

Use a sponge pad

Clean the tank lid and inside

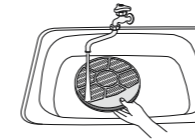
- There might be white substance adhered to rubber part of the tank lid. Please use toothbrush to clean it.

Humidifying Filter/Tray

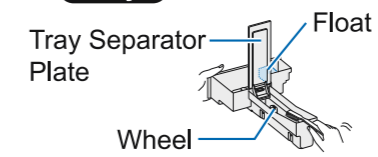
About once a month

Rinsing

Humidifying Filter



Tray



Do not separate Tray Separator Plate, Float and Wheel. ※ (otherwise, it might cause leakage or failure).

What to do when they drop off (P-24)

- Keep the Humidifying Filter at the status shown in the picture and take it to the sink. Then separate and clean it.
- Change the water in the tray frequently. (Otherwise, mould, bacteria and odor might generate.)

When sensitive to dirt or smell

Condition of the dirt	Scale (hard to remove) · smell		White substance (hard to remove)
	Kitchen-purposed compound detergent	Baking soda	Citric acid or vinegar (available in supermarket)
Items needed			
Amount	Water (below 40°C) Appropriate amount	Water (below 40°C) Appropriate amount	Water (below 40°C) Appropriate amount
Cleaning method			
Soaking time	About 30-60 minutes	About 30 minutes	About 2 hours
After soaking	Wash it thoroughly and ensure that there is no residue of detergent, baking soda, citric acid or vinegar (Otherwise smell, deformation or color changing of the main unit might happen).		

Caution

- Do not use foamy, strong-smelling, alkali or acid detergent. Otherwise deformation, color changing or cracking (leakage) might happen.
- If they are not washed thoroughly, the residue of detergent or citric acid might cause smell and deformation or color changing of the main unit.
- Do not separate Tray Separator Plate, Float and Wheel. Operating the Unit when there are scale or white substances might cause water leak.

Care and Maintenance (continue)

Change the filter when the odor and dirt cannot be removed or are too severe. **P-32**



Change the filter when the odor and dirt cannot be removed or are too severe. **P-32**

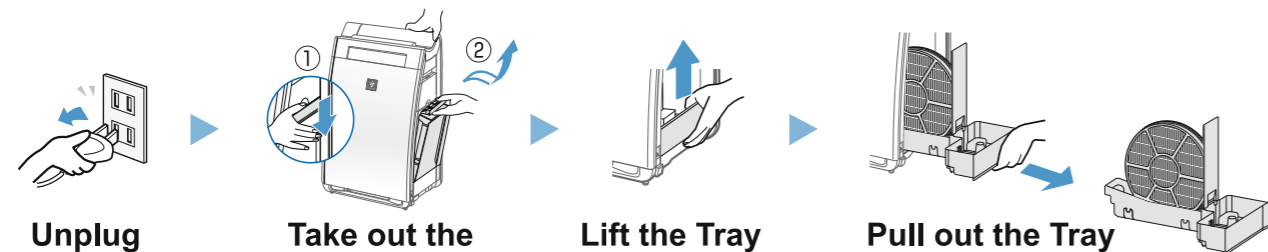
Warning

Be sure to turn off the unit and pull the plug off when maintaining it.

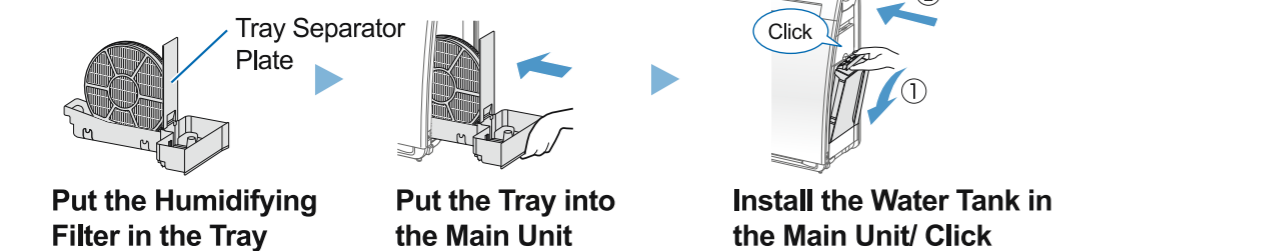
Otherwise, electric shock or injury might happen.

Water Tank/ Humidifying Filter/Tray

How to dismantle



How to install

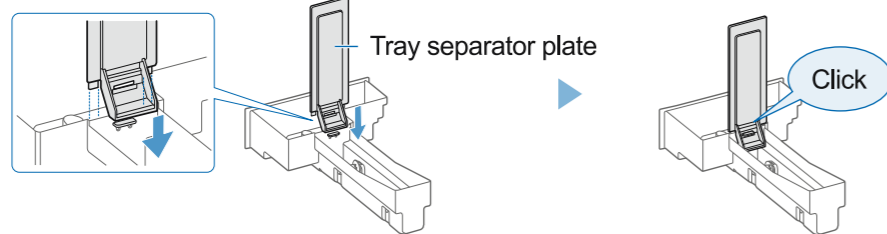


- Sometimes, the Tray Separator Plate is loose, which is normal.
- There is no difference for the two sides of the Humidifying Filter.

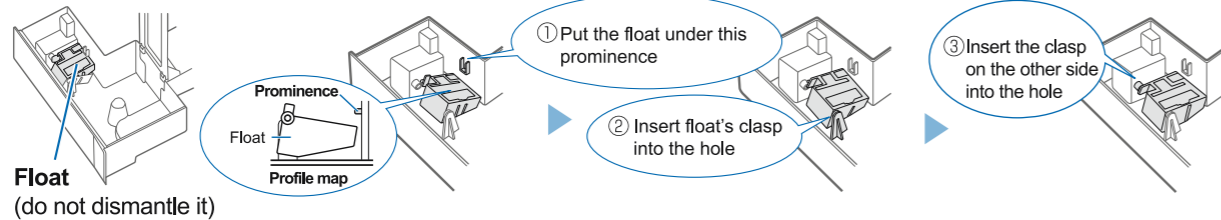
When the Tray separator plate/float/wheel falls off

Tray separator plate

Insert it as shown in the picture

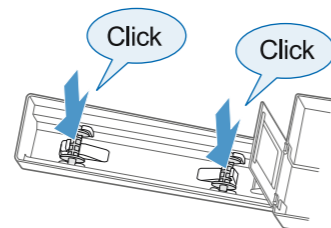


Float



Wheel

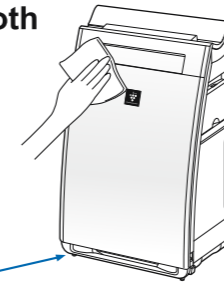
Hook the prominence of the tray in the direction shown in the picture



Main Unit/Back Panel

About once a month

Wipe it with a soft cloth



Wipe it with a wet cloth (water temperature below 40°C) when sensitive to dirt or smell

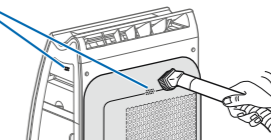
Never wash the Main Unit and Back Panel with water

Sensor

About once a month

Remove dust with vacuum cleaner

Sensor

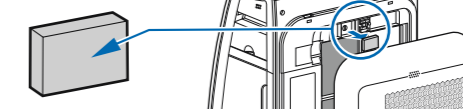


When sensitive to dirt or smell

Rinse the sensor filter

Sensor filter (no difference for the two sides)

- Install it after it dries completely



HEPA Filter/ Deodorizing Filter

When sensitive to smell from the air outlet

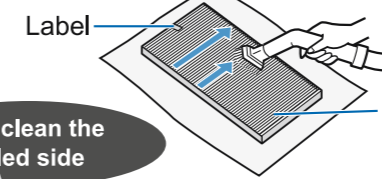
When sensitive to dirt or smell

Clean the dust on the filter with a vacuum cleaner

Never wash them with water (otherwise the filters will become ineffective)

HEPA Filter

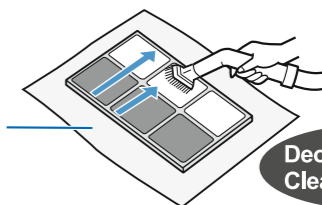
Deodorizing Filter



Only clean the labelled side

- Clean the dust adhered to the filter
- Do not use too much strength as the filters are easily broken.

Put newspapers under the filter to avoid polluting the environment



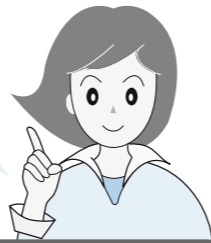
Deodorizing filter Clean both sides

- Filter will break when the cleaning strength is too much, so please keep this in mind.

※ It is not able to remove all the hazardous gases (like CO from cigarette) and constant smell (formaldehyde, pet smell, etc.)

Care and Maintenance (continue)

Please carefully clean and keep the PCI Generator in good repair so as to maintain the high concentration of PCI.

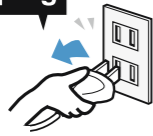


PCI Generator (Electrode)

Once six months (When it is operating 24 hours per day)

1

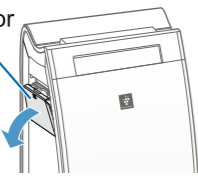
Unplug



Unplug

2

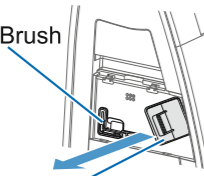
Shield of Generator



Take off the Shield of Generator

3

PCI Generator Brush



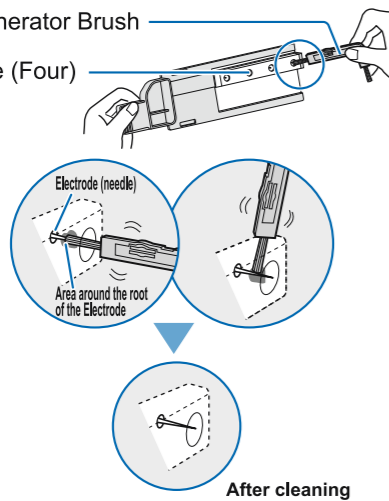
PCI Generator Frame Handle

Hold the PCI Generator Frame Handle and take it out

4

PCI Generator Brush

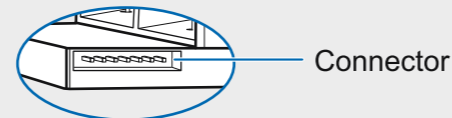
Electrode (Four)



Please use PCI Generator Brush or cotton bud to clean the dust on the Electrodes.

※ Please use wet cotton bud to clean when the dirt is hard to remove.

- Do not touch the Electrodes with your fingers. (Otherwise, it may lead to injury.)
- Do not transform the Electrodes. (Otherwise, it may lead to malfunction.)
- Do not touch the terminal. (Otherwise, it may lead to malfunction.)



Connector

5

Click



Install PCI Generator and Shield of Generator.

Caution

- Please insert the Generator to the bottom, otherwise, there will be an error E9 when operating.

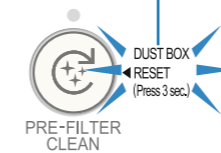
Dust Box

Dust Clean Indicator

Please clean the Dust Box when the Dust Clean Indicator is on.

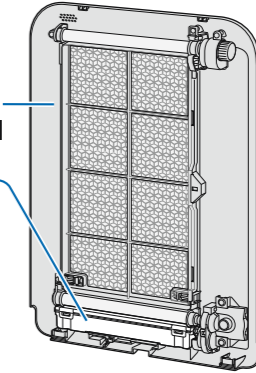
(The Indicator will be on every six months if the unit is used for 24 hours per day.)

Dust Clean Indicator

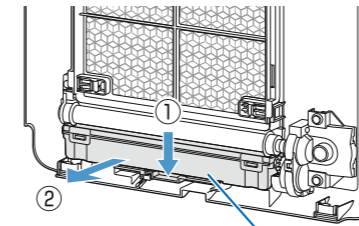


Back Panel

Dust Box



1



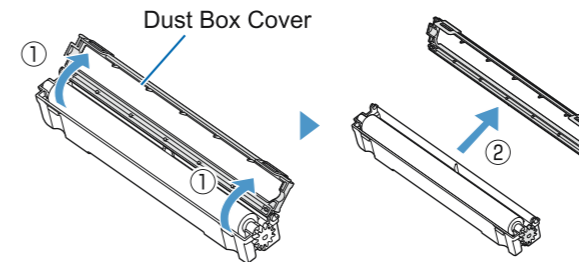
Dust Box

Take out the Dust Box from the Back Panel

- Press the handle (1) and take out the Dust Box (2) at the same time

How to dismantle the back panel (P-11)

2

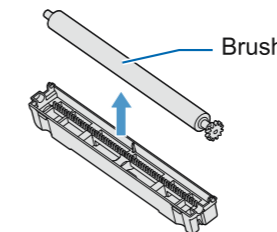


Dust Box Cover

Take off the Box Cover

- Discharge the two clasps (1) and take out (2).

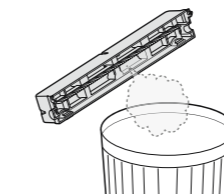
3



Brush

Take out the Brush

4



Dump the dust

Care and Maintenance (continue)

Warning

Be sure to turn off the unit and pull the plug off when maintaining it.

Otherwise, electric shock or injury might happen.

Dust Box

When the Dust Clean Indicator is on

5 Install the brush

6 Assemble the Dust Box

Prominence of the Cover Insert it in the groove (left and right)

7 Install the Dust Box into the Back Panel

- Press the handle(①) and put in the Dust Box(②) at the same time.

How to install the Back Panel (P-11)

After the maintenance

The operation starts. Press the Pre-filter Clean Button for 3 seconds to turn off the indicator

- Press the Pre-filter Clean Button for 3 seconds to reset it even if the cleaning indicator is not on.

After the maintenance Press for over 3 seconds

When sensitive to dirt or smell

Rinse

Install it to the main unit after it is dried thoroughly.

Dust Comb can be dismantled

How to dismantle it

How to install it

Cover the clasp

Pre-filter(Before Cleaning)

1

Filter frame

Handle

Move the handles (left and right) in the direction shown in the picture(①) and take out the filter frame(②).

How to dismantle the Back Panel (P-11)

2

Rotating Shaft (top)

Take off the Rotating Shaft

Prominence at the right Discharge directly

Prominence

3

Rotating Shaft (top)

Pre-filter

Pull out the Pre-filter from the Rotating Shaft (top)

4

Pre-filter

Rotating Shaft (bottom)

Pull out the Pre-filter from the Rotating Shaft (bottom)

5

Pre-filter

Soaking time: 10 minutes

Soaking and cleaning the Pre-filter

- Soak the Pre-filter in detergent (a proper amount)
- Rinse it thoroughly after 10 minutes to make sure that there is no residue of detergent
- Dry it thoroughly

Caution

- Do not clean it too hard. Do not wash it with a washing machine. (Otherwise it might cause damage.)
- Do not dry it with a dryer. (Otherwise it might cause shrinkage.)

Care and Maintenance (continue)

Warning

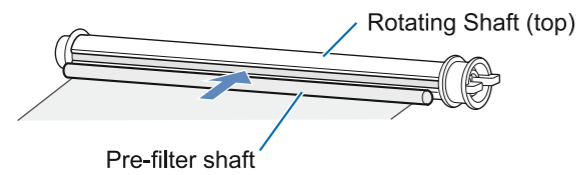
Be sure to turn off the unit and pull the plug off when maintaining it.

Otherwise, electric shock or injury might happen.

Pre-filter

When there is dirt or smell

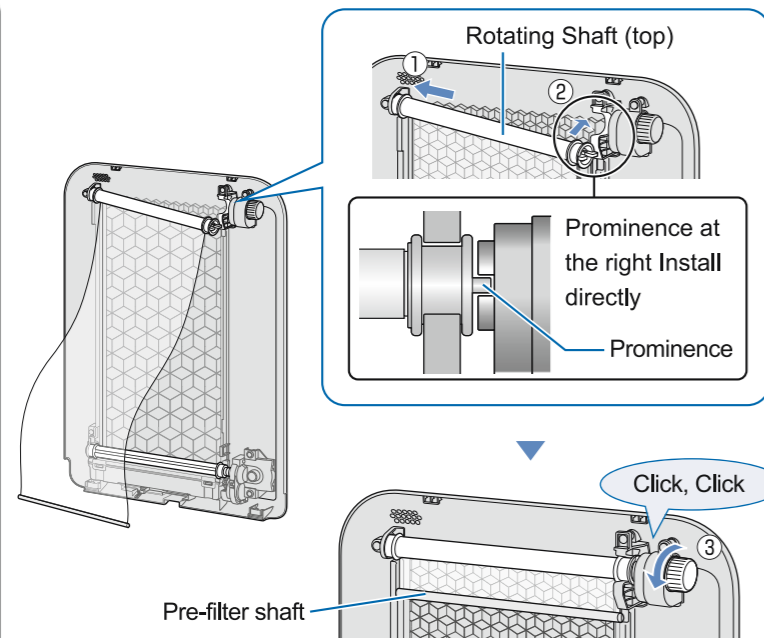
6



Put the Pre-filter into the Rotating Shaft (top)

- Insert the Pre-filter shaft into the groove of the Rotating Shaft (top)

7



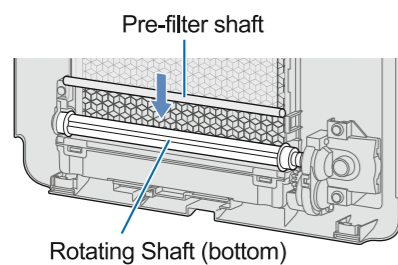
Install the Rotating Shaft (top) on the Back Panel

- Insert the left part of the Rotating Shaft (top) into the Back Panel (1) and install it (2).

Roll up the Pre-filter with an anticlockwise rotation.

- Roll up the Pre-filter completely (3)

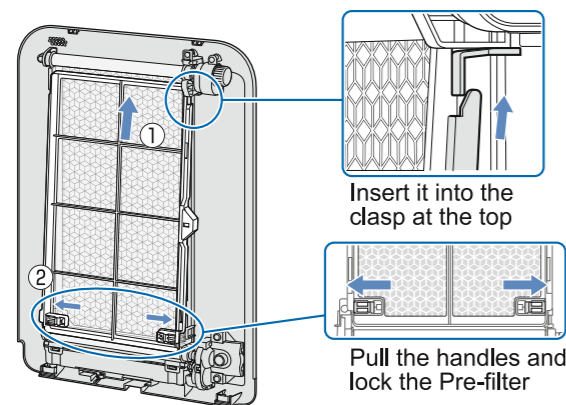
8



Pull down the Pre-filter shaft and install it to the Rotating Shaft (bottom).

- Insert the Pre-filter shaft into the groove of the Rotating Shaft (bottom).

9



Install Pre-filter Frame

How to install the Back Panel (P-11)

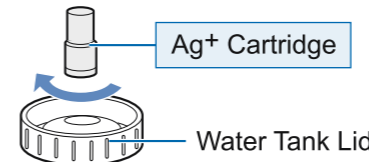
PCI Generator/Replacement of Consumables

Ag+ Cartridge

about 2 years*

Model:FZ-GB01AG-HK

Follow the replacing steps on product box (or operation manual).



The Ag+ Device is not a must, and it is for restraining water deterioration and smell generation.

* The time is calculated on the basis that 2.5L water is used per day (totalled 900L water for replacement) and varies according to the environment and water quality.

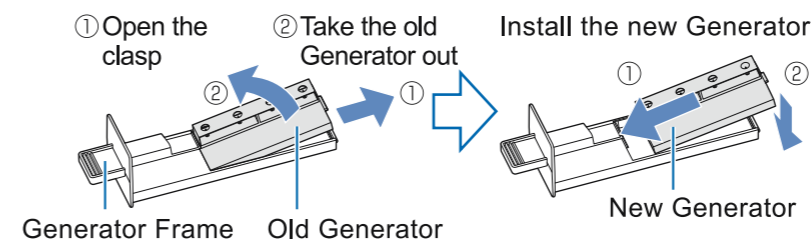
Water tank lid is not for replacement and please do not lose it.

PCI Generator

When the Generator Replacement Indicator (red) blinks*

Model:IZ-C75SE

Replace the Generator



Take out the old Generator from the Frame and install the new Generator.

- Pay attention to the installation direction. The Generator cannot be installed if it is put in reversely.
- How to take it out from the main unit: refer to (P-26).

Once the operation time reaches 17,500 hours (about 2 years if operating 24 hours per day), the Indicator will blink, indicating that the life time of the Generator expires. (The life time remains the same in different operation modes.)

Start using the Generator	Total operation time	Total operation time
	About 17,500 hours	About 19,000 hours
	● Please replace the Generator.	● No PCI will be released by the Generator
	⇨ UNIT ⇨ Replacement Indicator blinks (Red)	⇨ UNIT ⇨ Replacement Indicator blinks (Red)
(After replacing the Generator, the Replacement Indicator will be off.)		

PCI Generator/Replacement of Consumables (continue)

Warning

Be sure to turn off the unit and pull the plug off when maintaining it.

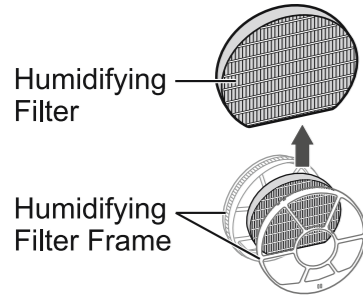
Otherwise, electric shock or injury might happen.

Humidifying Filter

about 2 years

Model:FZ-BB60XK-HK

Follow the replacing steps on the operation manual. **Humidifying Filter Frame does not need to be replaced and please do not lose it.**



Humidifying filter's life span differs according to the water quality. Please replace it when following situations happen:

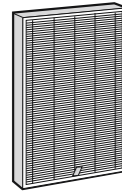
- It is not able to remove the incrustation or smell after cleaning;
- Severe color changing (black, yellow);
- White substances adhered to all the surfaces of the humidifying filter;
- Severe damage or deformation

Humidifying filter's life span differs in different situations, and it needs to be cleaned regularly.

HEPA Filter

about 5 years

Model:FZ-GF60XH-HK



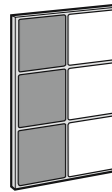
Follow the replacing steps on the operation manual.

The replacement might be as frequent as several weeks or months in some situation. It needs to be replaced if there is odor generated.

Deodorizing Filter

about 5 years

Model:FZ-G60DFE-HK



Follow the replacing steps on the operation manual.

The replacement might be as frequent as several weeks or months in some situation. It needs to be replaced if there is odor generated.

Caution

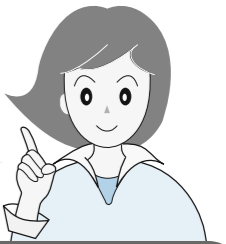
- When changing the filter, place newspapers under it to avoid polluting the environment.
- The old items need to be dealt with as non-burnable waste.
- The old items need to be dealt with according to local waste sorting regulations.

Humidifying filter	PET/Rayon	HEPA filter	PP/PE
Deodorizing filter	Active carbon/ABS resin(frame)	Ag ⁺ Cartridge	Nylon / PP

- The replacement of the consumables will be charged even when they are in warranty period.

Troubleshooting

Please review this chart before calling for repair service.



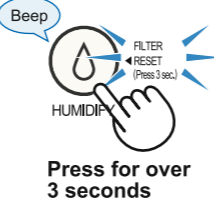
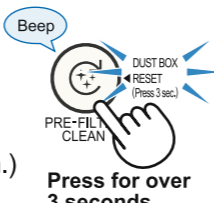
Problems	Please check	Please refer to
No vapor	<ul style="list-style-type: none"> ● No vapor will be seen as evaporation method is adopted (generating humid air via humidifying filter) instead of boiling the water 	—
Will humidification be excessive?	<ul style="list-style-type: none"> ● This will not happen as electrical heating is not adopted (confirm with the indicator during 'humidifying') 	—
Water in the Water Tank does not reduce, or the reduction speed slows down	<ul style="list-style-type: none"> ● Is the humidifying mode off? ● Is the Fan Speed set on the mode of "auto", "sleep", "pollen", or "spot purify/shower purify"? → Humidification will stop after reaching certain humidity. ● Are water tank, tray, humidifying filter and float correctly installed? ● Are there any incrustation or waste adhered to the humidifying filter? → Please clean and maintain it. ● Humidification level will change according to the room humidity and temperature. Humidification level will reduce slowly when the humidity level is high (when it rains) or it is cold. Humidification level will increase and water in the water tank will reduce quickly when the humidity level is low (dry weather) or it is hot. 	13 12,14 13,24 23,24
Humidity does not increase	<ul style="list-style-type: none"> ● Is there any water in the tank? ● Is the room too large? → Please use it in the room with the recommended size. ● Is the main unit located near the outlet of an air conditioner or a heater? → Please change the place as temperature/humidity sensor might be misguided. ● Is there any incrustation or waste adhered to the humidifying filter or the tray? → Please clean and maintain it. ● Is the temperature displayed? → Please switch the button of humidity/temperature to humidity. 	13 40 10 23,24 15
When the humidifying mode is on, the wind from outlet is cold	<ul style="list-style-type: none"> ● Evaporation absorbs heat so the room temperature will decrease. Sometimes it feels cold. (The air from the outlet is at about 15°C when the room temperature is 20°C and the humidity is 30%.) ● Please adjust the angle of the louver to change the wind direction. (The wind direction cannot be changed when the unit is on Full Power Shower/Clean Assist Modes.) 	— 14
Why tap water?	<ul style="list-style-type: none"> ● Tap water is chlorinated and thus hard for bacteria to reproduce, so please use tap water. If other types of water (mineral water, well water and water from water purifier) are used, it is easier for the bacteria to reproduce. If such water is used, please carefully clean the unit and parts regularly. 	—

Troubleshooting (continue)

Problems	Please check	Please refer to																		
Odor	<ul style="list-style-type: none"> Is filter still in the plastic bag? ⇒ Please take it out. Does the air from the outlet weaken? ⇒ Please clean the items with a <table border="1"> <thead> <tr> <th colspan="6">Items</th> </tr> <tr> <th>Sensor</th> <th>Water Tank</th> <th>Tray</th> <th>Humidifying filter</th> <th>Deodorizing filter</th> <th>HEPA Filter</th> </tr> </thead> <tbody> <tr> <td>★</td> <td></td> <td></td> <td>★</td> <td>★</td> <td>★</td> </tr> </tbody> </table> <p>※After canceling the Auto Clean of Pre-filter Mode, please clean the dust on the Back Panel with a vacuum cleaner.</p>	Items						Sensor	Water Tank	Tray	Humidifying filter	Deodorizing filter	HEPA Filter	★			★	★	★	11 22~25
	Items																			
	Sensor	Water Tank	Tray	Humidifying filter	Deodorizing filter	HEPA Filter														
	★			★	★	★														
The discharged air is smelly	<ul style="list-style-type: none"> Have you cleaned and maintained the Humidifying filter? ⇒ Please clean and maintain it. The water in the tray has not been changed for a long time? ⇒ Please clean and maintain the tray and humidifying filter. Is it used in a room with strong smell? The filter might be smelly in several weeks or months if the unit is used in an environment where there are strong smells like cigarette or barbecue or if there are bacteria reproduced in the Tray or Water Tank. The filter might need to be changed under such circumstance. ⇒ Please ensure the ventilation of the room while using the machine. Please check the items with a★ and clean and maintain those where smell is from. <table border="1"> <thead> <tr> <th colspan="6">Items</th> </tr> <tr> <th>Sensor</th> <th>Water Tank</th> <th>Tray</th> <th>Humidifying filter</th> <th>Deodorizing filter</th> <th>HEPA Filter</th> </tr> </thead> <tbody> <tr> <td></td> <td>★</td> <td>★</td> <td>★</td> <td>★</td> <td>★</td> </tr> </tbody> </table>	Items						Sensor	Water Tank	Tray	Humidifying filter	Deodorizing filter	HEPA Filter		★	★	★	★	★	23 23,24 22~25 32 22~25
Items																				
Sensor	Water Tank	Tray	Humidifying filter	Deodorizing filter	HEPA Filter															
	★	★	★	★	★															
	<ul style="list-style-type: none"> A small quantity of ozone will be produced when PCI is generated. So, there will be a small amount of odor, which is not harmful to the health. 	—																		
	<ul style="list-style-type: none"> The sound is caused by water flowing from water tank to tray. The sound frequency differs on humidifying levels. 	—																		
Sound	A clicking or ticking sound comes from the back of the unit	<ul style="list-style-type: none"> Is the Pre-filter clean indicator on the Control Panel blinking? ⇒ This sound is made when the unit is on Pre-filter Auto Clean Mode. 	16																	
	A clicking or ticking sound comes from the unit	<ul style="list-style-type: none"> It is the sound when PCI is generated, which is not abnormal. The volume differs in different environment and operation modes. Sometimes it is mute. PCI effect is all the same. PCI can be turned off. 	15																	

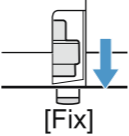
Problems	Please check	Please refer to	
Pre-filter Auto Clean	There is dust on Pre-filter	<ul style="list-style-type: none"> Is the Dust Box full? ⇒ Please clean and maintain the Dust Box. Is the Dust Box installed? ⇒ Pre-filter Auto Clean cannot be performed normally if the Dust Box is not installed. Please install it. The dirt on Pre-filter cannot be completely removed in some situation. If so, please take out the Pre-filter and clean and maintain it manually. 	27,28 27,28 29,30
	The Pre-filter Auto Clean function will not perform.	<ul style="list-style-type: none"> Pre-filter Auto Clean function will not perform if it has not been 48 hours since last Auto Clean operation. Is it dark in the room? ⇒ The Pre-filter Auto Clean will not start if it is dark in the room. Is the unit on Full Power Spot Purify/Shower/Clean Assist Mode? ⇒ Pre-filter Auto Clean function will not perform when the unit is on Full Power Spot Purify/Shower/Clean Assist Mode. Is the air in the room dirty? ⇒ Pre-filter Auto Clean function will not perform if the Dust Indicator is not displaying the color of [Blue]. Are there any buttons pressed? ⇒ If there is any button pressed, the Pre-filter Auto Clean will not start until 10 minutes later. 	16 16 16 16
	The Pre-filter Auto Clean starts even after it has been set OFF (cancelled).	<ul style="list-style-type: none"> The Pre-filter Auto Clean will start anyway after 720 hours' operation to prevent the Pre-filter from being blocked by dusts. 	16
	The Pre-filter Auto Clean operation is halted, but the Pre-filter Auto Clean Indicator still blinks	<ul style="list-style-type: none"> If the Pre-filter Auto Clean operation is halted, the Pre-filter Auto Clean Indicator will keep blinking until the Pre-filter returns to its original position. 	16
	The Pre-filter Auto Clean operation stops when the Back Panel is opened.	<ul style="list-style-type: none"> The Pre-filter Auto Clean operation will stop for the sake of safety once the Back Panel is opened. 	—
	Air purifying operation stops, and the Pre-filter Auto Clean Indicator blinks	<ul style="list-style-type: none"> The air purifying operation will halt once the Pre-filter Auto Clean operation starts. 	16
	Operation	There is no reaction but a beeping sound after pressing any button	<ul style="list-style-type: none"> Is the unit set on Child Lock Mode? ⇒ Press the Louver button for 3 seconds to unlock.
The operation stops suddenly and there is no air from the outlet.		<ul style="list-style-type: none"> Is the unit on Pre-filter Auto Clean Mode? ⇒ The operation stops when the unit is on Pre-filter Auto Clean Mode (it lasts about 8 minutes). 	16

Troubleshooting (continue)

Problems	Please check	Please refer to																		
Humidifying Clean Indicator is on.	<ul style="list-style-type: none"> Clean items with a★. <table border="1"> <thead> <tr> <th colspan="6">Items</th> </tr> <tr> <th>Sensor</th> <th>Water Tank</th> <th>Tray</th> <th>Humidifying filter</th> <th>Deodorizing filter</th> <th>HEPA Filter</th> </tr> </thead> <tbody> <tr> <td></td> <td>★</td> <td>★</td> <td>★</td> <td></td> <td></td> </tr> </tbody> </table>	Items						Sensor	Water Tank	Tray	Humidifying filter	Deodorizing filter	HEPA Filter		★	★	★			23,24
Items																				
Sensor	Water Tank	Tray	Humidifying filter	Deodorizing filter	HEPA Filter															
	★	★	★																	
Humidifying Clean indicator does not go off	<ul style="list-style-type: none"> Have you pressed the Humidify Button for over 3 seconds? ⇒ After cleaning, press the Humidify Button for over 3 seconds to reset it. (The indicator will turn off then.) 	21																		
Dust Clean Indicator is on.	<ul style="list-style-type: none"> It is time to clean the Dust Box. Please empty the Dust Box and clean and maintain it. 	27,28																		
Dust Clean Indicator does not turn off	<ul style="list-style-type: none"> Have you pressed the Pre-filter Auto Clean Button for over 3 seconds? ⇒ After cleaning the Dust Box, press the Pre-filter Auto Clean Button for over 3 seconds to reset it. (The Dust Clean Indicator will turn off then.) 	27,28																		
Indicator There is water in the Water Tank but the Humidifying Indicator is off or is blinking in red	<ul style="list-style-type: none"> Is the float stuck somewhere? ⇒ Clean the float and make use it is properly installed. 	23,24																		
	<ul style="list-style-type: none"> Are water tank and tray properly installed? ⇒ install them correctly in the main unit. 	24																		
	<ul style="list-style-type: none"> The float might malfunction when there are magnetic objects nearby like loudspeaker and electromagnetic device. 	—																		
	<ul style="list-style-type: none"> Is the unit on Clean Assist Mode? ⇒ The humidifying operation stops when the unit is on Clean Assist Mode and the Humidifying Indicator is off. 	14																		
The PCI indicator is off	<ul style="list-style-type: none"> When the unit is on Fully Auto Mode, or the fan speed is on "auto", "sleep" or "pollen", or the unit is on Full Power Spot/Shower mode, humidification will stop after reaching certain humidity and the indicator will turn off. 	12,14																		
	<ul style="list-style-type: none"> Is the main unit slant? ⇒ Place it on a flat place. 	—																		
The PCI indicator is off	<ul style="list-style-type: none"> Is the front Monitor set at off? ⇒ Change the setting to "auto" or "dim". 	17~20																		
	<ul style="list-style-type: none"> Is PCI Generator set at "Off"? ⇒ Press fan speed button for over 3 seconds to set PCI Generator at "On". 	15																		
PCI Generator Replacement Indicator is blinking.	<ul style="list-style-type: none"> Is PCI Generator Replace Indicator On? ⇒ Please replace the old PCI Generator with a new one. 	31																		
	<ul style="list-style-type: none"> It is time to replace the PCI Generator. Please replace the old PCI Generator with a new one. 	31																		

Problems	Please check	Please refer to	
PM2.5 Sensor Indicator	Conditions when PM2.5 indicator is off	<ul style="list-style-type: none"> There are big particles in the room but PM2.5 particles are in small amount. (Dust sensor indicator is in orange or blinking in red) There were cigarette smoke or lit license. ⇒ The indicator will not lighten up immediately and it usually takes some time after PM2.5 accumulates. 	9
	Conditions when PM2.5 indicator does not turn off	<ul style="list-style-type: none"> When an oil-fired oven is used (smoke from burning). When cooking (cooking fumes) ⇒ When indoor air is polluted, open the windows for ventilation and use the humidifying air purifier. 	9
		<ul style="list-style-type: none"> The windows are open all the time (PM2.5 from outside) or the room impermeability is poor (PM2.5 from gaps of the door/windows) ⇒ As polluted air will enter the room, please close windows and control the ventilation and set fan speed as "medium" or "high" or set the unit at Full Power Spot Purify or Shower mode. (Sometimes it takes some time to clear PM2.5) 	14
Differs from weather forecast result of PM2.5	<ul style="list-style-type: none"> There are influences like traffic flow and the height of the room in the building, which leads to a different result of PM2.5. 	—	
Dust Sensor Indicator	Dust Sensor Indicator does not change/ Odor Sensor Indicator will not be on	<ul style="list-style-type: none"> After a period of operation, the sensitivity becomes not stable or the indicator light color does not change. Then several minutes later, the sensitivity is stabilized. ⇒ If still not sensitive, adjust the sensitivity of High Sensitive Dust Sensor and Odor Sensor. The indicator keeps being blue means the room air is clean. ⇒ Sometimes it is hard for the unit to sense the smell from certain places of the room, then pat a towel or blow a burning cigarette near the sensor to see if the color changes. if the color changes, it is normal. If it is used in a room with a strong smell, the sensitivity of the indicator might be reduced. ⇒ Set the fan speed at "medium" and keep it running for several hours or 1 day. When the sensitivity does not accord with the room situation. ⇒ Turn it off and reset the sensitivity of High Sensitive Dust Sensor and Odor sensor to "high" or "standard". 	17~20
	Cleanliness Dust sensor indicator will not turn to blue	<ul style="list-style-type: none"> When the air is polluted, the light will flash between orange and red. When the windows or doors are opened frequently, or when the impermeability of the room is not good, it will take some time for the light to change to blue. 	9
	Dust Sensor Indicator and Odor Sensor Indicator are always in red	<ul style="list-style-type: none"> Is the sensor blocked by wastes? ⇒ Clean the sensor. 	25
	The color of Dust Sensor Indicator/ PM2.5 Sensor Indicator /Odor Sensor Indicator keeps changing	<ul style="list-style-type: none"> The closing and opening of the door might cause airflow and thus the switch of the light color. Adjust the sensitivity of the sensor. ⇒ Stop operation and set the sensitivity of High Sensitive Dust Sensor and Odor Sensor at "low" or "standard". 	17~20

Troubleshooting (continue)

	Problems	Please check	Please refer to
Light Control of Front Monitor	The Front Monitor turns dim or off	<ul style="list-style-type: none"> When the Light Control is set at "Auto", the Light Control Sensor will detect the luminance of the room and the monitor will switch between "Bright" and "Dim" accordingly. (When the fan speed is set on the mode of "sleep", the Monitor will switch between "Dim" and "Off".) 	10,19
	The light of the Front Monitor changes frequently.	<ul style="list-style-type: none"> The Light Control Sensor will detect the shadows of objects or people and thus change accordingly. The sensitivity can be adjusted. <ul style="list-style-type: none"> ⇒ Turn off the machine and adjust the sensitivity of the brightness sensor. 	10 17~20
	The light of the Front Monitor does not change according to the room luminance.	<ul style="list-style-type: none"> When the unit is located right below the lighting equipment or located in the shadow, the Light Control Sensor will not be able to detect the real situation of the luminance of the room and the light of the Monitor will not be able to change accordingly. <ul style="list-style-type: none"> ⇒ Please relocate the unit. The sensitivity of the sensor might not match the room condition. <ul style="list-style-type: none"> ⇒ Stop operation and adjust the sensitivity of the Light Control Sensor. 	10 17~20
Temperature/Humidity Indicator	The indication of current temperature or current humidity differs from the result of other thermometers or hygrometers	<ul style="list-style-type: none"> Temperature and humidity of different places of the room may differ. The difference between this machine and other thermometer or hygrometer may be caused by the sensitivity difference between them. (please take the indication of the temperature/humidity as a reference.) Is it not showing the monitoring data you need? <ul style="list-style-type: none"> ⇒ Press temperature/humidity Button to switch to the data you need. 	— — 15
	The main unit falls over (when it is humidifying or there is water in the tank)	<ul style="list-style-type: none"> If the main unit falls with water in tank or tray, turn off the power, pull out the plug and contact the retailers or SHARP franchised distributors for check. 	
Others	Want to fix the main unit	<ul style="list-style-type: none"> Press down the caster locks (left and right) to fix the casters. Please make sure the two locks are locked at the same time. 	6,10
	Cold air from the outlet	<ul style="list-style-type: none"> Switch the fan speed to "Mute". Adjust the angle of the front louver manually. 	12 14
	There are red, yellow or white substances adhered to water, humidifying filter and tray	<ul style="list-style-type: none"> Minerals and iron from the tap water may adhere, which is normal. <ul style="list-style-type: none"> ⇒ Please drain the water and clean the humidifying filter and the tray. 	23,24
	The Tray Cannot be taken out	<ul style="list-style-type: none"> Lift the tray slightly and then pull it out. 	24
	Not using it for a long time Not using the humidifying function	<ul style="list-style-type: none"> Dry every part after cleaning and maintaining dry thoroughly before installation, especially for humidifying filter and tray, to prevent the reproduction of mould and bacteria. 	21~24

	Problems	Please check	Please refer to
Error	Front Monitor shows E2	<ul style="list-style-type: none"> Are the Humidifying Filter, Tray and Wheel correctly installed? <ul style="list-style-type: none"> ⇒ Confirm the installation and try the operation again. 	23,24
	Front Monitor shows E7	<ul style="list-style-type: none"> Is the Pre-filter correctly installed? Is the Dust Box correctly installed? Is the Cleaning Brush of the Dust Box correctly installed? 	29,30 27,28 27,28
	Front Monitor shows E9	<ul style="list-style-type: none"> Is PCI Generator correctly inserted? <ul style="list-style-type: none"> ⇒ Take out the PCI Generator and insert it again right to the bottom and operate it again. 	26
	Front Monitor shows U3	<ul style="list-style-type: none"> The concentration of PCI reduces. <ul style="list-style-type: none"> ⇒ Please clean and maintain the PCI Generator (Electrode). 	26
	Front Monitor shows U7	<ul style="list-style-type: none"> Is the Back Panel correctly installed? 	11
	Front Monitor shows C1 C4 C6 C8	<ul style="list-style-type: none"> Unplug, wait for about one minute and plug the unit and try again. <div style="border: 1px solid black; padding: 5px; margin-top: 10px;"> If the error indication appears repeatedly, contact the retailers or SHARP franchised distributors for repair. </div>	—

