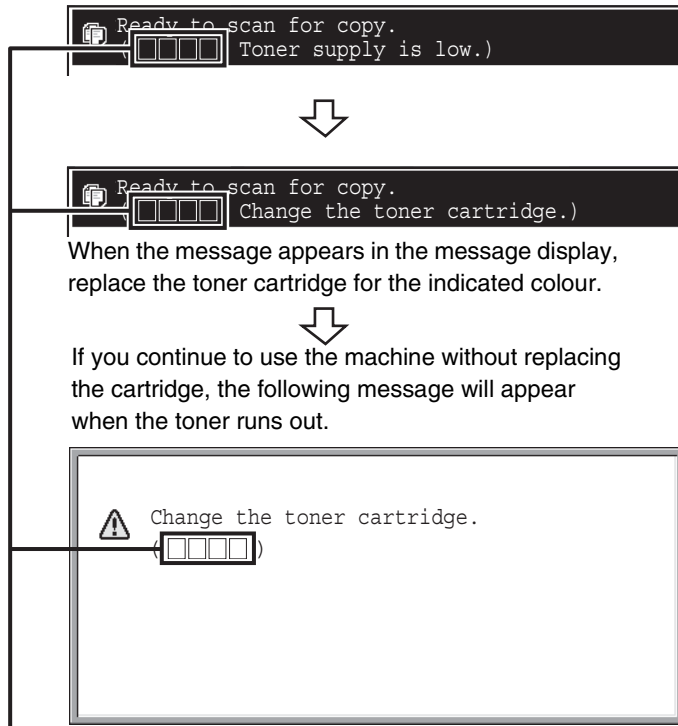


# REPLACING THE TONER CARTRIDGES

Be sure to replace the toner cartridge when the message "Change the toner cartridge." appears.

## In copy mode



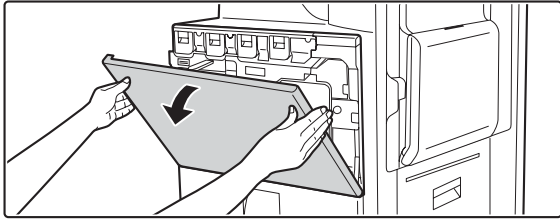
Colours that are running low or have run out of toner are indicated in (Y M C Bk).

Y: Yellow toner, M: Magenta toner, C: Cyan toner, Bk: Black toner

Replace the toner cartridges of the indicated colours.

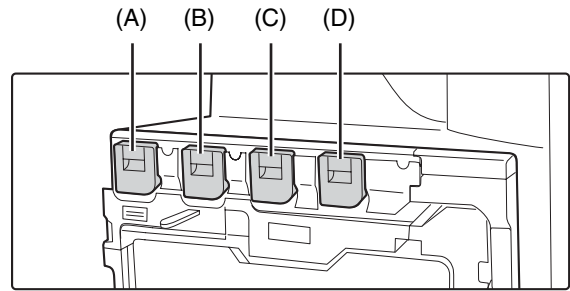
- If any one of the toner colours runs out (including black toner), colour printing will not be possible. If Y, M, or C toner runs out but Bk toner remains, black and white printing will still be possible.
- Be sure to install 4 toner cartridges (Y/M/C/Bk).

1



**Open the front cover.**

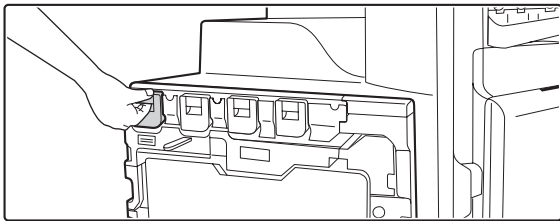
**Locations of colour toner cartridges**



(A): Yellow (B): Magenta  
(C): Cyan (D): Black

2

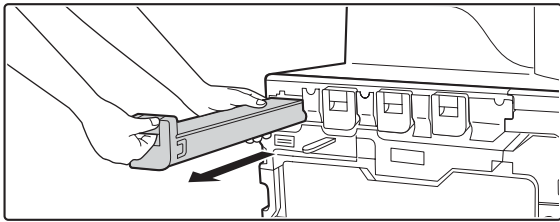
**Example: Replacing the yellow toner cartridge**



**Pull the toner cartridge toward you.**

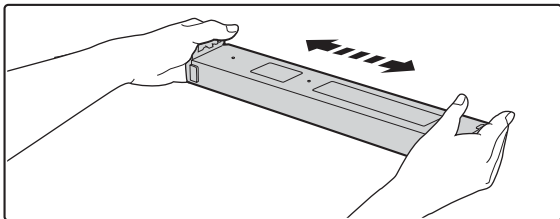
Raise the toner cartridge lever and gently pull the toner cartridge horizontally toward you.

When pulling out the toner cartridge, pull it out gently. If the cartridge is pulled out abruptly, toner may spill out.



Hold the toner cartridge with both hands as shown and pull it out of the machine.

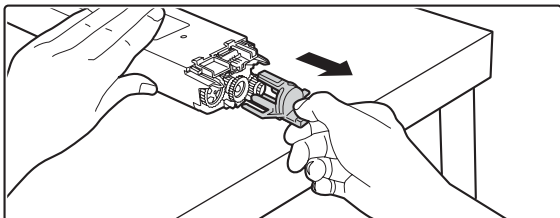
3



**Remove a new toner cartridge from its package and shake it horizontally five or six times.**

When shaking the toner cartridge, be sure to shake with the protective material inserted in the cartridge.

4

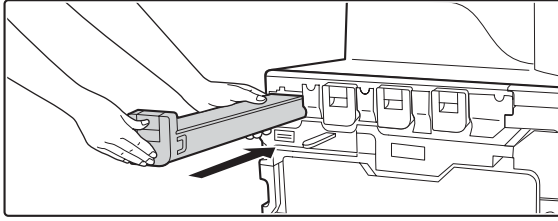


**Remove the protective material from the new toner cartridge.**

Hold the toner cartridge firmly while removing the protective material.

After the protective material has been removed, do not point the toner cartridge down or shake it.

5

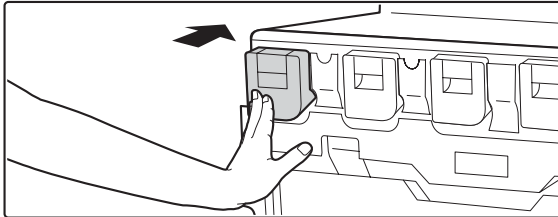


**Insert the new toner cartridge horizontally.**



A toner cartridge of a different colour cannot be installed. Be sure to install a toner cartridge of the same colour.

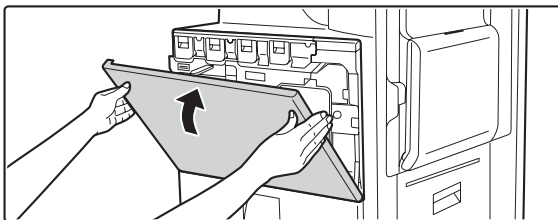
6



**Push the cartridge in until it locks securely in place.**

Push the cartridge firmly in until it clicks into place.

7



**Close the front cover.**

After the toner cartridge is replaced, the machine automatically enters image adjustment mode.

### Caution

- Do not throw a toner cartridge into a fire. Toner may fly and cause burns.
- Store toner cartridges out of the reach of small children.
- If a toner cartridge is stored on end, the toner may harden and become unusable. Always store toner cartridges on their side.
- If a toner cartridge other than a SHARP-recommended toner cartridge is used, the machine may not attain full quality and performance and there is a risk of damage to the machine. Be sure to use a SHARP-recommended toner cartridge.



- Keep the used toner cartridge in a plastic bag (do not discard it). Your service technician will collect the used toner cartridge.
- To view the approximate amount of toner remaining, continually touch the [COPY] key during printing or when the machine is idle. The percentage of toner remaining will appear in the display while the key is touched. When the percentage falls to "25-0%", obtain a new toner cartridge and keep it ready for replacement.
- Depending on your conditions of use, the colour may become faint or the image blurred.