
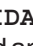
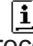





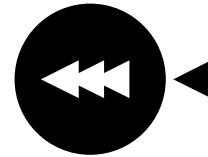
ADDING TONER

The message “(TONER SUPPLY IS LOW. PRESS  FOR GUIDANCE.)” will appear in the message display before the toner supply is completely empty. If copying is continued, copies will gradually become lighter until the copier stops and the message display changes to “ADD TONER. PRESS  FOR GUIDANCE.” indicating that the toner supply is empty. Toner can be added any time after the message “(TONER SUPPLY IS LOW. PRESS  FOR GUIDANCE.)” appears. To add toner, stop the copier and proceed as below. When either message appears, you can use the INFORMATION () key for detailed information as necessary.

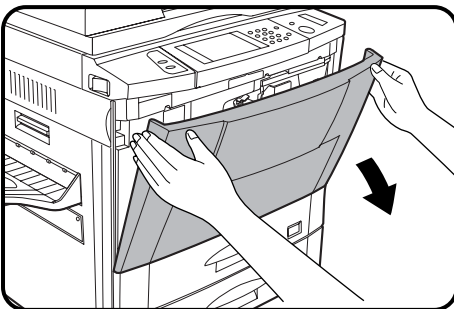
During long copy runs of multiple originals containing many images and/or dark shades, “TONER REPLENISHMENT IN PROGRESS.” will appear and the copier will stop making copies even though toner is left. The copier will automatically cycle and replenish the toner to the normal level and then the START () key indicator will light up. Press the START () key to resume copying.

For best copying results, be sure to use only Sharp products. The package of Sharp toner has the Genuine Supplies label.

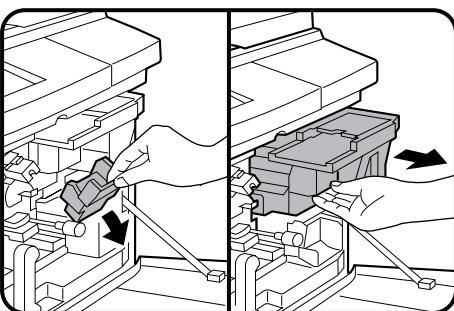
SHARP



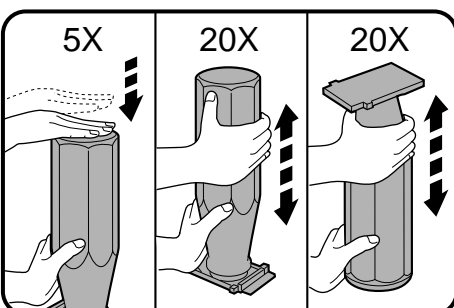
GENUINE SUPPLIES



1 Open the front cover.

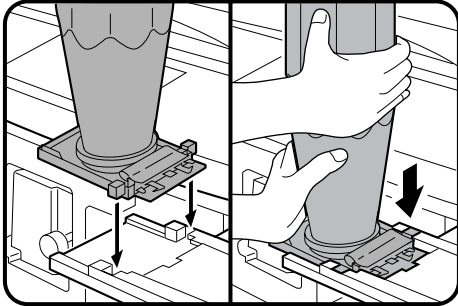


2 Pull down the toner hopper lock lever and pull the toner hopper out slowly until it stops.

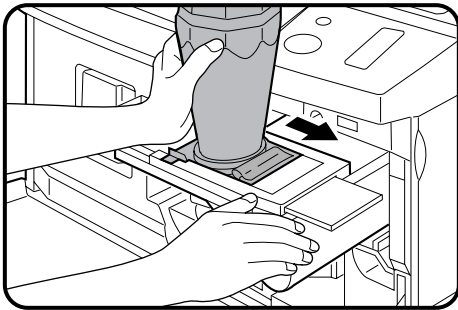


3 Tap on the top of the toner cartridge 5 times. Hold the new toner cartridge vertically and vigorously shake it up and down about 20 times, then invert the cartridge and again shake it up and down about 20 times. This will loosen the toner and allow it to flow more easily into the toner hopper.

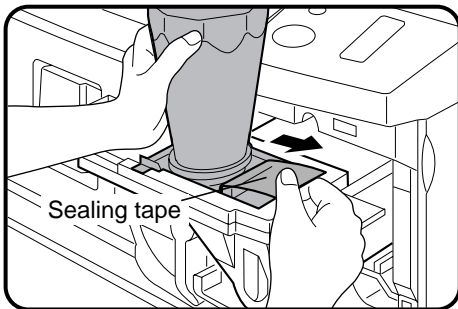
- When any caution label is attached to the new toner cartridge, read it carefully and remove it.



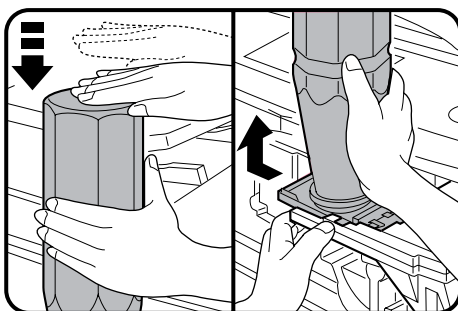
4 Place the new toner cartridge with the tabs in the notches as shown.



5 Slide the toner cartridge along the guides over the toner hopper.



6 Hold the toner cartridge with one hand while pulling on the sealing tape to remove it.

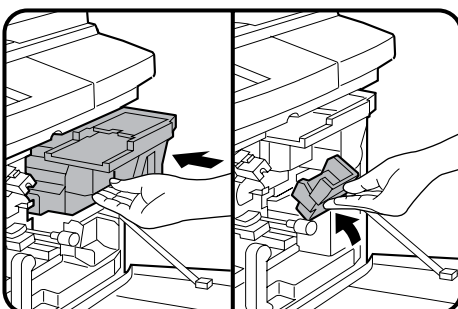


7 Tap on the top of the toner cartridge 5 times to start the flow of toner into the toner hopper.

- If the toner cartridge was sufficiently shaken as described in step 3, it will take about 50 seconds for the cartridge to empty. Do not remove the cartridge until it is empty. If not empty, tap on the top of the cartridge again until empty.

8 Slide the empty toner cartridge back along the guides and remove it.

- The cartridge opening will be closed as it is moved back along the guides.



9 Slide the toner hopper into the copier and return the toner hopper lock lever into place.

10 Close the front cover.

NOTE:
Add only one cartridge of toner.